



Green Chain Project Office  
5<sup>th</sup> Floor, Crown Building  
48 Woolwich New Road,  
London, SE18 6HQ  
T: 020 8921 5091 Fax: 020 8921 5442  
info@greenchain.com  
www.greenchain.com

FREEPOST RRZZ TLHU GKZS  
Planning Service  
London Borough of Lewisham  
5th Floor, Laurence House  
1 Catford Road  
London SE6 4RU

LONDON BOROUGH OF LEWISHAM PLANNING SERVICE	
DATE REC'D	09 APR 2010
CASE No	.....
REGD No	.....

1<sup>st</sup> April, 2010

**Ref: : Lewisham Core Strategy proposed submission version Consultation: Green Chain Working Party response**

Thank you for providing the Green Chain Working Party with the opportunity to respond to the above.

The SE London Green Chain is currently covered by policy OS 3 in the adopted Lewisham UDP, and appears on the proposals map as part of a sub- regional protected open-space area (the SE London Green Chain).

The Green Chain Joint Committee's aim is to achieve and promote the objectives and policies set out in the 1977 Green Chain Policy Document. These objectives can be summarised as:

- Improving and encouraging the provision of suitable recreational facilities
- Safeguarding the open land from built development.
- Conserving and enhancing public awareness of the visual amenity and wider landscape.
- Improving public access to and through the area.
- Promoting an overall identity for the area
- Encouraging the collaboration and co-operation of the various public and private agencies, owners, organisations, clubs, etc. in the area to achieve the above objectives.

**South East London Green Chain:**

The London Boroughs of Bexley, Bromley, Greenwich, Lewisham and Southwark working in partnership to safeguard, enhance and promote the Green Chain open spaces for the enjoyment of all.

The Green Chain Working Party welcomes the general thrust of the proposed submission in relation to achieving the above objectives.

In particular, the important strategic role that the Green Chain provides in protecting and enhancing open spaces within the borough is recognised in Policy 12: 2 (b&c).

Policy 14:2. also recognises the important role of the Green Chain in promoting sustainable movement and transport in the borough.

Finally, in providing accessible and varied opportunities for recreational activities, the value of the Green Chain is acknowledged in Objective 7.

The Working Party therefore proposes no changes to the proposed submission version.

Proposals Map-Proposed Changes

In addition to supporting the proposed changes, we seek confirmation that the recent Lewisham extension of Green Chain Walk (GCW) will be indicated on the proposals map (using the yellow dots that illustrate the other sections of the GCW in the borough). This covers the sections through "The Wood" SNCI (to the West of Sydenham Wells Park), Sydenham Wells Park and the Horniman Gardens and (on the public highway) the relevant sections of Crystal Palace Park Road (north side), Wells Park Road, Westwood Park, Langton Rise, Westwood Park and London Road. The attached Overview map (Map A and B) show the relevant sections of the GCW to be included on the map.

Yours Sincerely

Mark Taylor



Chair,  
Green Chain Working Party

**South East London Green Chain:**

The London Boroughs of Bexley, Bromley, Greenwich, Lewisham and Southwark working in partnership to safeguard, enhance and promote the Green Chain open spaces for the enjoyment of all.

January 10

These maps cover the jobs detailed in chapters 1 – 6 of the sign schedule for section 11. For the location of jobs detailed in chapter 7 please see the individual job sheets



Key	
	Main route
	Alternative route avoiding steps
	Kingston Post
	Guildford Post
	Green Chain Bench
	Sheet metal sign
	Waymarker post
	Sign Removal

Route of  
Green Chain Walk  
in Lewisham Borough  
(to be added to proposal map)



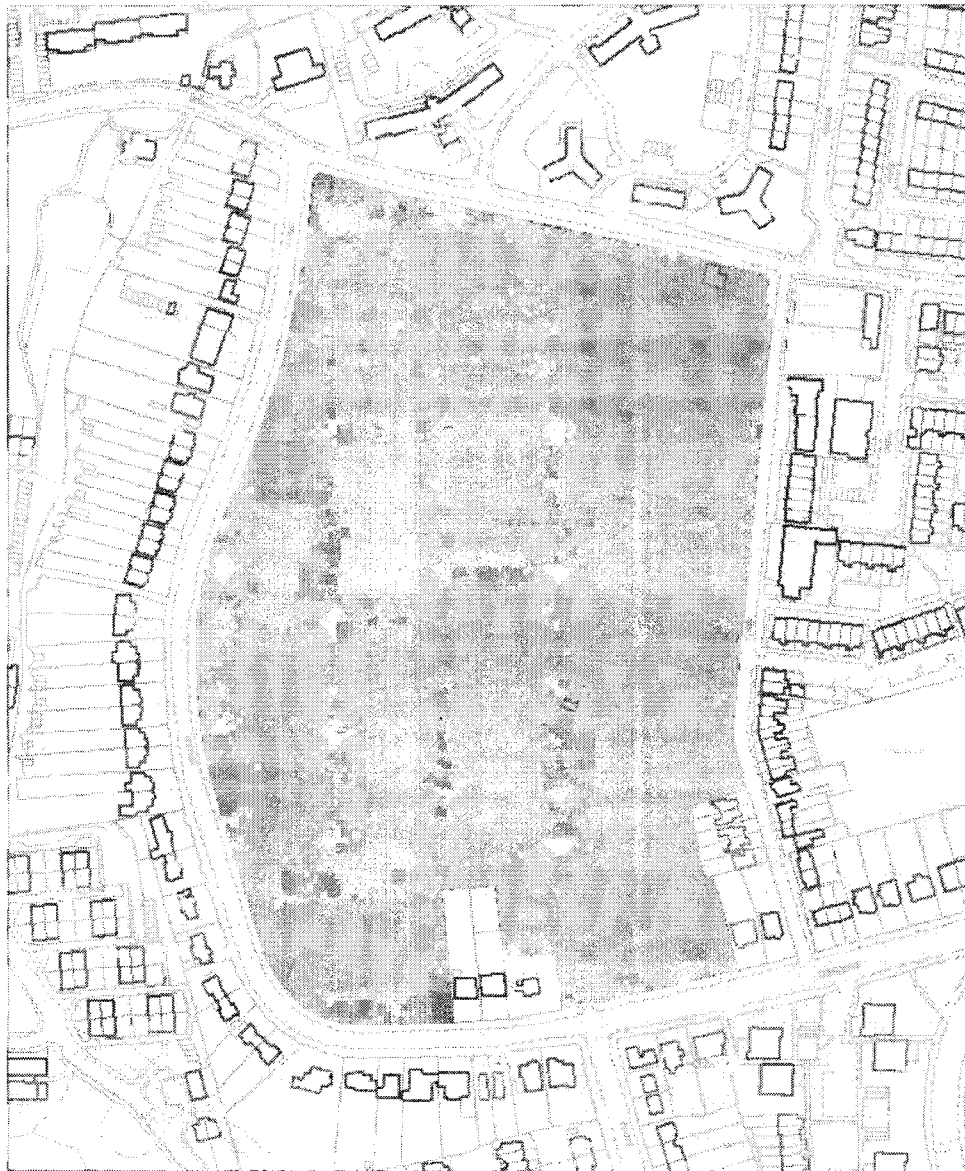


Route of GREEN  
CHAIN WALK IN  
LEWISHAM  
BOROUGH  
(TO BE ADDED TO  
PROPOSAL MAP)



Map 4.8 Change from public open space to metropolitan open land and green chain at Sydenham Wells Park

To Include GREEN CHAIN WALK

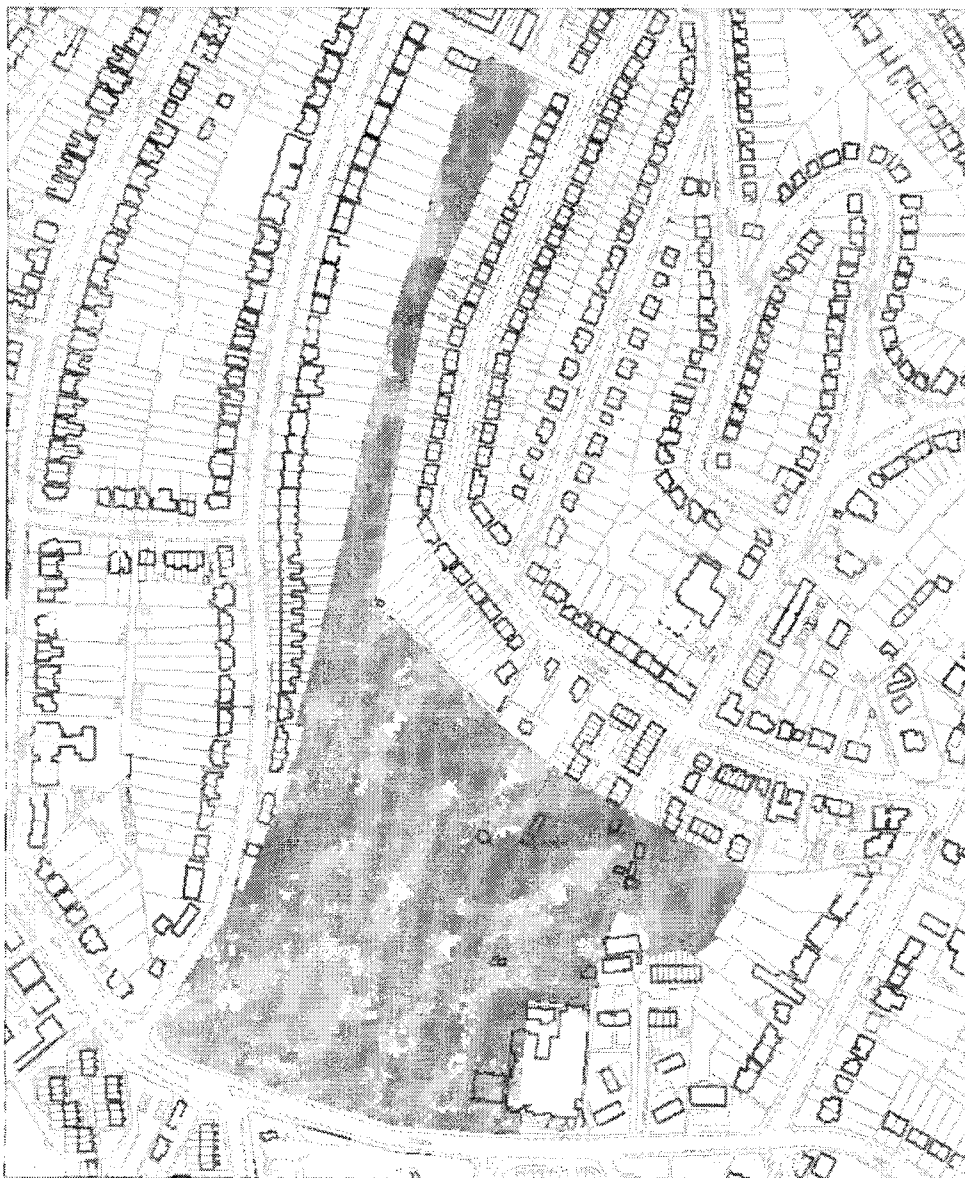


Designation of Sydenham Wells Park as Metropolitan Open Land and Green Chain Area

© Crown Copyright. All rights reserved.  
License 100017110 2006

**Map 4.9 Change from public open space to metropolitan open land and green chain at Horniman Gardens**

TO INCLUDE GREEN CHAIN WALK



**Designation of Horniman Gardens as  
Metropolitan Open Land and Green Chain Area**

  
© Crown Copyright All rights reserved  
Licence 1000 1710 2005