

# LDF Planning Newsletter #1

**July 2005**

**Welcome** to the first of a series of newsletters we are sending out to keep you updated with the London Borough of Lewisham's progress in preparing the Local Development Framework.

## **Introduction...**

As you may have heard through our previous contact the new Planning and Compulsory Purchase Act 2004 has required the Council to replace its existing Unitary Development Plan with a new style document called a Local Development Framework (LDF).

*Much work has been going on to develop the LDF process and this newsletter is to keep you updated of what's happening.*



**What's been happening so far?**

## **The Local Development Scheme**

The Local Development Scheme (LDS) came into effect on the 19<sup>th</sup> of May 2005. It is essentially a work programme setting out what LDF documents the Council will produce over the next three years. It also sets out the timetable.

The LDS should be your first point of call to find out what stage of the LDF process the Council is at.

You can obtain a copy from the Council offices or are freely available on our website: [www.Lewisham.gov.uk](http://www.Lewisham.gov.uk)

## **Sustainability Appraisal Scoping Report – Core Spatial Strategy**

The Council has prepared a Sustainability Appraisal Scoping Report which sets out the framework to test the LDF against. This will ensure the documents which flow on from it reflect the principals of sustainable development. The document has been through public consultation which ended on the 20<sup>th</sup> June. Comments from this initial consultation are being reviewed and considered in our issues and options papers. We will respond to people's comments on the scoping report in the coming weeks.

## **Statement of Community Involvement:**

The new planning system strongly encourages community involvement in the preparation of the LDF from an early stage in the plan making process.

One of the key points in the new legislation is the requirement of a Statement of Community Involvement (SCI) which details how the Council will consult with the community about various planning documents and applications.



Work has commenced on preparation of a draft SCI which has been guided by the responses to the Council's questionnaire about community consultation which was undertaken in May and June of this year. A draft SCI was released for consultation on the 20<sup>th</sup> July for a period of 6 weeks, closing date **31<sup>st</sup> August 2005**. A copy of the document is located on the Council's website at [www.lewisham.gov.uk](http://www.lewisham.gov.uk) or alternatively at all Lewisham Libraries.

Should you have any further questions on the SCI please contact Sally Peters on 020 8134 6540.or e-mail; [sally.peters@lewisham.gov.uk](mailto:sally.peters@lewisham.gov.uk)

## Issues and Options Discussion Papers

We are currently working on papers to discuss what the main planning issues are facing the borough and how to deal with them in planning policy terms. These papers also include broad policy options that could be included in our Core Strategy for Development Plan Documents.

**To get this stage right we need your comments on the issues papers and what options you think will best address them in the LDF**

The Issues papers are freely available on our website [www.lewisham.gov.uk](http://www.lewisham.gov.uk) or please contact our planning policy team on 020 8314 6247. The ones we now have ready for your comments are;

## Waste



This paper explores the following:

- Waste Reduction
- Provision of new Waste Management Sites
- Protection of existing Waste Management Sites
- Standards and criteria for waste storage & Waste Management Site allocations.

## Urban Design

This paper addresses the design of new development in the

context of reducing crime and the fear of crime, producing well designed, inclusive and accessible environments, protection and enhancement of the historic environment, and other important physical features



## Housing

This paper addresses affordable housing issues, and development control issues specifically relating to housing



## Sustainable Environment

This paper explores in detail the following issues: -

- Renewable Energy and Energy Efficiency
- Flood Risk & Climate Change, Sustainable drainage and River Water Quality
- Air Quality
- Contaminated Land and Hazardous Substances.
- Reducing Noise

**Your comments on any of the issues or options presented in these papers would be**

**appreciated prior to September 12<sup>th</sup> 2005.**

## More to come

There are still more issues and options papers for your consideration and these will be available in August. Those still to come are: retail and town centres, open space and biodiversity, employment, transport, community facilities / health and education and site allocations.

## Supplementary Planning Documents

### Shopfront design guide

This will provide practical advice, using illustrative materials, on the various elements of shopfront design and outline the Council's preferred outcomes in support of policies relating to good urban design and presentation of streetscapes.

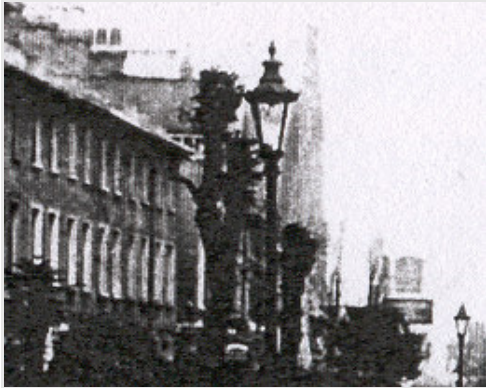
### Residential development standards

This will provide practical advice and guidance to ensure that new residential development is well designed, makes a positive contribution to the urban scene, is accessible, and designed with safety and security in mind. Public consultation will take place for six weeks in September/October 2005.



## Brockley Conservation Area

A draft supplementary planning document (SPD) has been prepared for Brockley Conservation Area. This document sets out the historic and architectural character of the area as well as suggesting proposals for its preservation or enhancement.



**Public consultation on this SPD will run from the end of July and end on 23 September 2005.** This encompasses a formal six week period comprising three weeks from the end of July and three weeks to 23rd September, with the school holiday period in between. In practice, the Council will accept comments and answer queries for the whole period to allow the maximum number of people to participate.

Further information is available from Justine Page, Conservation Officer on 020 8314 6071 and the document can be viewed on the Council's website from late July

## Lewisham Town Centre Area Action Plan

The Lewisham Town Centre is planned to be the subject of considerable development over the next 10 years, with the Council aiming to improve the

centres standing within the London-wide retail hierarchy and to provide substantial new housing, retail and leisure/recreational development. The extent of change envisaged makes it essential that a detailed and locationally specific planning document is in place to guide and manage future changes and to maximise the benefit derived from the expected development



Work has started on this plan, with consultation on the visions and objectives taking place in May 2005. A Sustainability Appraisal Scoping Report has been produced and can be viewed on the Council's website. Planning consultants, Urban Practitioners, are assisting the Plan's preparation. Public consultation on issues and options will start in July / August 2005.

## Catford Town Centre Area Action Plan

The Catford Town Centre Area Action Plan will set out a detailed set of policies and proposals for the on-going redevelopment and regeneration of Catford Town Centre. It will provide for major redevelopment opportunities, including significant housing development

and traffic / transport infrastructure changes.

The Council is just about to start work on this Plan. The first stage will be to get the community's views on the scoping report which will include the vision and objectives. This consultation is due to start in August 2005.

## To find out more...

Please don't hesitate to contact our planning policy team if you would like more information or have comments to make on the LDF process. The team:

**Brian Regan:** Policy Manager

**Rosemary Duckworth:** Senior Policy Planner

**Sally Peters, Olivia Campbell, Shana Harding:** Planning Officers

## Contact us:

Send written comments to the Planning Policy Unit at:

5<sup>th</sup> Floor, Laurence House  
1 Catford Road  
Catford SE6 4RU

Email your comments to the Planning Service at:  
[www.lewisham.gov.uk/planning](http://www.lewisham.gov.uk/planning)

Contact the Planning Policy Unit on:

Ph. 020 8314 6247

