

# Lewisham LIFE

Summer 2024 | [lewisham.gov.uk](http://lewisham.gov.uk)

## Meet your new Mayor

**Brenda Dacres elected  
as Mayor of Lewisham**

- Enjoy a summer of fun in Lewisham
- Discover the borough's newest vibrant arts festival, SEEN
- Get support with the cost of living

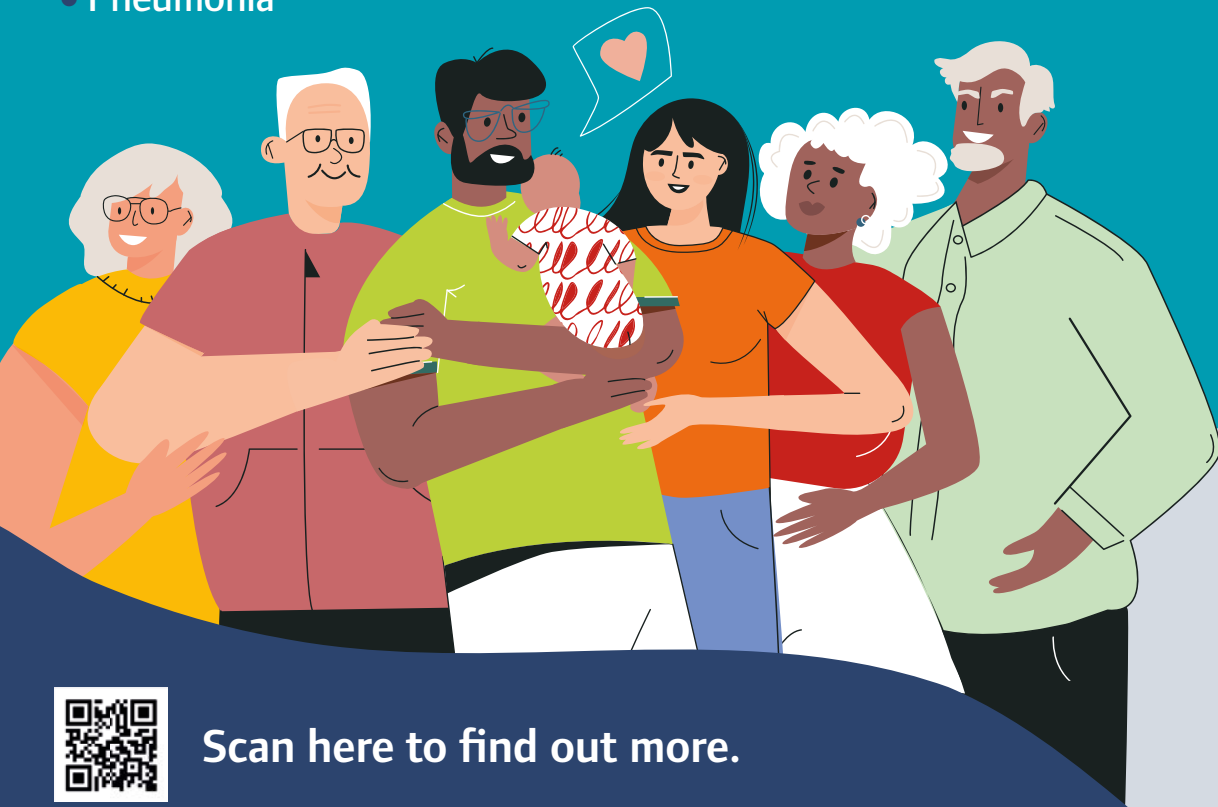


Lewisham

# Are you and your family fully vaccinated?

## Immunisation helps to protect against:

- Measles
- Mumps
- Rubella
- Diphtheria
- Polio
- Whooping cough
- Meningitis
- Influenza
- Shingles
- Pneumonia



Scan here to find out more.

Ask your GP for support if you're not sure.

[lewisham.gov.uk/vaccinations](http://lewisham.gov.uk/vaccinations)

**South East London**  
Integrated Care System



Welcome

**SIGN UP**

to our weekly newsletter  
[lewisham.gov.uk/signup](http://lewisham.gov.uk/signup)

## Message from the Mayor



**Brenda Dacres,**  
Mayor of  
Lewisham

Welcome to the Summer 2024 issue of Lewisham Life – my first as your new Mayor!

There's something for everyone inside. From our new arts festival SEEN, to summer holiday activities for all the family and community events taking place in our parks and local businesses... and much more.

Last year we successfully bid for money from the Levelling Up Fund to improve Lewisham Library and the town centre. Following our consultation, you can find out what

happens next on page 8. Many residents and businesses have spoken to me about the Bakerloo line extension project and how we can make sure we finally get a tube service in our borough. You can read more about what we're doing to bring this closer to reality on page 6.

We know times are still hard for lots of people, with energy bills, food and the day-to-day cost of living still having a big impact, so we're continuing to work with partners to make sure help is available locally – find out more on page 16.

I'm not the only newly elected mayor in Lewisham – on page 30 you can meet our brilliant new Young Mayor, Bilvilyn Asamoah, who is just 13-years-old but has huge ambitions for Lewisham's young people!

Finally, I'd like to say thank you to Cllr Tauseef Anwar following his decision to step down as Speaker after three terms. I'm pleased that Cllr Jacq Paschoud has agreed to be the new Speaker and look forward to telling you more about their civic and ceremonial activities soon.

I hope you enjoy this issue of Lewisham Life – please do subscribe to our weekly e-newsletter to keep up to date, and scan the QR code below to join our new WhatsApp channel, where you can get updates to share with your own local groups. If you'd like to reach me directly, you can email me at [brenda.dacres@lewisham.gov.uk](mailto:brenda.dacres@lewisham.gov.uk)

A handwritten signature of Brenda Dacres in black ink.

Brenda Dacres, Mayor of Lewisham



- 5 Meet your new mayor
- 6 News
- 15 Discover Lewisham this summer
- 20 SEEN festival
- 22 Parks and open spaces
- 24 Cost of living
- 26 Climate action plan
- 28 Street trees
- 30 Meet the new Young Mayor
- 31 Your Council



**Produced by:** The Communications Team, Lewisham Council **Editorial:** 020 8314 7027.  
**Email:** lewishamlife@lewisham.gov.uk **Photographs:** istock.com, Jeff Teader, Nancy Yuill.  
**Issue 144 summer 2023.**  
**Printed by** Sterling Solutions. Lewisham Council does not accept responsibility for goods or services offered by advertisers. Please use your recycling bin when you dispose of this magazine.

Sign up to the Lewisham Life newsletter. Keep up to date with news and information about Council services every week. Go to [lewisham.gov.uk/signup](http://lewisham.gov.uk/signup)



**lewisham.gov.uk**  
 the home for all your local information

- » Get information about your neighbourhood, what's on and how to get involved
- » Find activities for you and all the family
- » Live in a controlled parking zone? Apply for your permit online
- » Get local news and information direct to your inbox – subscribe at [lewisham.gov.uk/signup](http://lewisham.gov.uk/signup)

**If you cannot contact us online, you can call 020 8314 6000**

**Useful contacts:**

- Housing Services**  
0800 028 2028  
[housingenquiries@lewisham.gov.uk](mailto:housingenquiries@lewisham.gov.uk)
- Local health service**  
[nhs.uk](http://nhs.uk) or NHS 111
- Police (non-emergency) 101**
- Thames Water**  
0845 920 0800 (customer services)  
0800 714 614 (24-hour leakline)
- Gas emergencies 0800 111 999**

**SIGN UP** to our weekly enewsletter [lewisham.gov.uk/signup](http://lewisham.gov.uk/signup)

# Meet your new Mayor

**Brenda Dacres was elected as the new Mayor of Lewisham in March, becoming the first Black woman to serve as a directly elected mayor in London.**



**M**ayor Dacres told us: "It's a privilege and an honour to be the first Black woman to serve as a directly elected mayor in London. When my parents came here, they instilled in me their ethics of community and giving back. I've worked hard to get to where I am today, and I'll work hard for the people of Lewisham."

"I am committed, to making the changes we need, to give better opportunities in housing, for our young people, the local economy, and the environment."

Brenda was raised in south-east London, after her parents came to England from Jamaica in the 1960s as part of the Windrush generation. Her dad worked as a mechanic and black cab driver, and her mum as an NHS nurse. A Lewisham Council grant allowed Brenda to be the first person in her family to attend university.

After she completed her degree in Physical Sciences with Computing, Brenda juggled a distance learning Law degree with working

in I.T and raising her son, Darnell, as a single parent. In 2006, she was called to the Bar by Middle Temple.

A Lewisham resident for over 40 years and a councillor since 2014, Brenda has represented New Cross and Deptford and held Environment, Transport and Safer Communities briefs. In 2021, she became our Deputy Mayor and Cabinet Member for Housing Development and Planning.

"I'm excited to ensure Lewisham keeps moving forward and that the voices of all residents and businesses are heard. I'm proud to call Lewisham my home, proud to represent Lewisham, and be a part of our fantastic community."

"I've spent a lifetime fighting against low expectations. I didn't accept them for me and I'll never accept them for Lewisham residents".

For the full results of the election held on 7 March, visit [lewisham.gov.uk/election-march24](http://lewisham.gov.uk/election-march24)

# Backing the Bakerloo

Lewisham Council urged MPs to back the Bakerloo line extension at the launch of a new report in Parliament.

The report sets out the benefits to the whole country of extending and upgrading the Bakerloo line into the borough and beyond, including unlocking 20,000 homes, creating 10,000 jobs and delivering a £1.5bn boost to

the UK economy. However, the project cannot go ahead without government funding.

Brenda Dacres, Mayor of Lewisham, said: "The Bakerloo line is vital to unlocking the new homes, jobs and investment Lewisham needs and deserves. We've been arguing for the upgrade and extension for many years and this report sets out

the clear benefits not just for Lewisham and London, but for the whole country."

It would involve new trains and signalling and would add stops at Lewisham, Catford and New Cross Gate. It would result in a train every two to three minutes between Lewisham and Central London and mean 20,800 fewer car trips daily.

Brenda Dacres, Mayor of Lewisham, at the launch of the new report in Parliament



## Help us transform Catford town centre

Catford is already a vibrant part of our borough, with a great sense of community, and some of Lewisham's most scenic parks. Looking to the future, we want to work with you to plan the regeneration of Catford town centre.

Shaped by four years of consultation and over 3,000 comments and ideas from residents, The Catford Town Centre Framework sets out plans for a greener, more vibrant and more accessible Catford.

If Transport for London (TfL) is successful in re-routing the South Circular (currently in planning), new public spaces can be created in Catford that could make the town centre a better place for pedestrians and cyclists.

We are asking residents, businesses, and community groups to give feedback on design ideas for this new public space. Have your say before 3 July 2024 and find out more by visiting: [lewisham.gov.uk/catford](http://lewisham.gov.uk/catford)

## Getting empty homes back in use

In the current housing crisis and with thousands of families across the capital in temporary accommodation, we've committed to renovating as many empty homes in Lewisham as possible.

In the last year we have fully renovated two previously uninhabitable properties that stood empty for 15 months but are now ready for use by households in temporary accommodation.

We have since started work on a further three homes, are currently supporting four property owners to apply for grants, and we're planning enforcement action against five property owners who are refusing to engage with the council.

If you have an empty property or know of one, do get in touch with our helpful team by emailing: [emptyhomes@lewisham.gov.uk](mailto:emptyhomes@lewisham.gov.uk)

## Introducing your CommUNITY Space

Nestled in the south mall of Lewisham Shopping Centre, Lewisham CommUNITY Space is a vibrant hub where people of all ages can play games, share a meal, or unwind with a book.

With support from our partners

Enable, Maroon Fitness and The Felix Project, we're using the space to offer a variety of classes and health initiatives.

Boxing, yoga, and music/video production are all part of a jam-packed schedule. There's also

employment support for people looking to get back to work and wellbeing sessions for those wanting to rejuvenate their minds.

Explore our full offering online at [lewishamshopping.co.uk/lewisham-community-space](http://lewishamshopping.co.uk/lewisham-community-space)

## Building blocks of progress

In October 2023, Lewisham Council took over the management of more than 13,500 social rent homes across the borough, following the transfer of staff and services from Lewisham Homes.

In December, we took the

decision to refer ourselves to the government's Regulator of Social Housing for a potential breach of its consumer standards. The Regulator published a regulatory notice in March which outlines its findings and highlights the areas that are most urgent to address.

We have already made progress and will continue working with the regulator until we have achieved full compliance for our residents.

You can find out more at [lewisham.gov.uk/newsandupdates](http://lewisham.gov.uk/newsandupdates)

## Summer reading

The Summer Reading Challenge offers free holiday fun for kids, focusing on reading for pleasure and boosting literacy skills.

It runs throughout the summer and is open to children aged four to 11. Participants can choose any reading material and collect rewards. Sign up at local libraries or online.

This year's theme is creativity, with various free activities across Lewisham Libraries, from treasure hunts to comic book workshops. Keep an eye on the libraries.

[lewisham.gov.uk/events](http://lewisham.gov.uk/events) for exciting and creative activities. The challenge runs from Saturday 6 July to Tuesday 1 September.



## More support for Lewisham families

The borough's third Family Hub is now open at Downderry Children and Family Centre in Downham. The new-style Family Hubs make it easier for parents and carers to access a range of free services, activities and support – all under one roof.

The services available from the new Hub include parenting and feeding advice, support with wellbeing and mental health,

and early language development. There are also activities for older children and young people aged 11 to 19 (25 with a special educational needs).

The Family Hub in Downham is located on Shroffold Road, BR1 5PD. It is open from 9am to 5pm, Monday to Friday and can be contacted on 020 8695 5915 or by emailing [family.hubs@lewisham.gov.uk](mailto:family.hubs@lewisham.gov.uk)

## Your feedback was next level

A huge thank you to everyone who shared their thoughts on our design proposals for Lewisham town centre. Thousands of you got involved over the six week consultation period – whether

by viewing the designs online, filling out our survey, or joining the conversation at one of our focus groups.

The consultation has now closed and we are busy reviewing your feedback. Please

watch this space as we'll soon be sharing the key findings and next steps.

In the meantime, check our website for information and updates: [lewisham.gov.uk/lewishamtc](http://lewisham.gov.uk/lewishamtc)

## Children's services rated 'Good'

Ofsted has rated Lewisham Council's children's services as 'Good' following an in-depth inspection. This is a big vote of confidence and step in the right direction, after services were judged as 'Requires Improvement' five years ago.

In their report, inspectors said that there have been 'significant improvements' in the council's children's social care services and that this has improved the quality of the support and care that children and families across the borough receive. You can read the full report on Ofsted's website.



## Nominations for 2024 Mayor of Lewisham's Business Awards

From Saturday 1 June nominations will open for the 2024 Mayor of Lewisham's Business Awards!

The awards are a yearly opportunity to celebrate our fantastic local businesses and the outstanding contribution they make to the borough.

To nominate a local business please visit [lewisham.gov.uk/businessawards](http://lewisham.gov.uk/businessawards)

Winners, across a range of categories, will be celebrated at a ceremony at the Broadway Theatre in Catford later this year.



Ed the Baker, 'Best independent food retailer' winner at the 2023 Mayor of Lewisham's Business Awards

# Proud to be the UK's first Borough of Sanctuary

Lewisham has a proud history of supporting sanctuary seekers. We are an open and welcoming borough for those fleeing violence and persecution in their own countries and we protect the rights of all migrants, asylum seekers and refugees.

We are proud to be the UK's first Borough of Sanctuary. As part of this accreditation, we are regularly assessed and monitored by the City of Sanctuary movement. We are happy to announce that following our most recent assessment, our status as a Borough of Sanctuary has been

successfully maintained.

The assessment panel highlighted some of the brilliant work being done in Lewisham including our support system for people seeking asylum and our co-production project helping us work closely with a group of residents from sanctuary seeking backgrounds. Our partnership working with local organisations, such as Action for Refugees in Lewisham (AFRIL). Lewisham Refugee and Migrant Network (LRMN) was also praised for including schools, GP surgeries and many other community groups across Lewisham.



## Supporting refugee employment

In March, Lewisham Council launched two new employment programmes for refugees as part of FaceWork.

Funded by the Council and delivered in partnership with 'Lewisham Works', the programmes are another example of our ambition for every resident to get the support they need to achieve their career potential.

During our 2023 pilot, FaceWork engaged 120 Ukrainian refugees on a 10-week employment programme which focused on understanding the language of work and soft skills –



so important to finding a job and performing in the workplace.

Attendees were welcomed by Cllr Kim Powell, Cabinet Member for Businesses, Jobs and Skills, and

Mayor Brenda Dacres.

Find out more: [www.face.work](http://www.face.work) and for more information about our Sanctuary work, visit [lewisham.gov.uk/sanctuary](http://lewisham.gov.uk/sanctuary)

## Thank you to our litter pickers



Since taking on the role of community litter pickers, James Evans and his two young sons, Thomas and Robin, have become local heroes. What began as James's way to alleviate his son's anxiety has evolved into a mission to tidy up their local streets and public areas.

Their dedication highlights the power of community action and the impact even our youngest residents can have on improving our environment. We want to inspire residents, businesses, and community groups to get involved in litter picks and help keep Lewisham clean and tidy.

Check out our website or email [cleanerlewisham@lewisham.gov.uk](mailto:cleanerlewisham@lewisham.gov.uk) to find out how to get involved.

## Local heroes

The Mayor's Community Awards are set to take place again this autumn! Launched in 2017, the awards recognise the extraordinary contributions of those who work, live or study in Lewisham and who volunteer time and support to benefit others.

It's an annual opportunity to celebrate the unsung local heroes who positively impact our local communities and inspire others. We're eager to acknowledge and celebrate the wonderful groups, businesses, and individuals whose contributions make Lewisham a great place to be.

The awards are organised by Lewisham Council and delivered in partnership with Lewisham Local and the four categories we are focusing on this year are:

- Individual
- Young Person (age 21 and under)
- Business
- Faith or Community Group

Nominations will open soon, so keep your eyes peeled and a massive thank you to everyone who works to improve Lewisham. Please contact [civicevents@lewisham.gov.uk](mailto:civicevents@lewisham.gov.uk) for more information.

## Community works

Our target to make Lewisham a net zero borough by 2030 is ambitious and requires all of us to play a part. Our Community Energy Fund and Lewisham Loves Lofts are just two initiatives that highlight how the council is supporting community activity.

We've already awarded 19 grants to local schools and community groups through the Community Energy Fund. These grants support a range of projects, such as installing solar panels and improving energy efficiency in public buildings.

Lewisham Loves Lofts, funded by Lewisham Council's UK Shared Prosperity Fund, is delivered by South East London Community Energy (SELCE) to help residents clear out and insulate their lofts.

Find out more about Lewisham Loves Lofts at [selce.org.uk/greening-your-home](http://selce.org.uk/greening-your-home)



## Grab early bird tickets for Sleeping Beauty

After the runaway success of Jack and the Beanstalk last year, we're pleased to announce that Sleeping Beauty will be the Broadway panto for Christmas 2024.

Promising fun for all the family, this modern twist on the classic tale is brought to you by the award-winning Susie McKenna. Set in the magical kingdom of Lewishtonia, can the princess break the wicked fairy Carabosse's spell?

Expect colourful characters, knockabout comedy, show-stopping routines and no shortage of magic.

Book by Wednesday 31 July to take advantage of early bird ticket prices, starting at £12.50.

Visit: [broadway.org.uk](http://broadway.org.uk)

## À la Cat!

After the council secured a new operator, we're thrilled to announce the return of Catford Food Market. Head down to Catford Bridge train station between 10am and 3pm on the last Sunday of every month to taste incredible dishes from talented local traders.

Follow @CatfordFoodMarket on Instagram to stay in the loop for more updates.



## Amp up your recycling

This year we've installed 17 small electrical recycling banks around the borough, and we're delighted to share that 10 more are on the way.

We joined the UK-wide Recycle Your Electricals campaign to make it easier for you to recycle your old electrical items.

From kettles and toasters to old phones and keyboards, anything with a battery or cable can be recycled – even the cables themselves!

Visit the council website to find your nearest recycling bank.

## Free business support in Lewisham libraries

Whether you're just starting out or looking to develop your business, Lewisham libraries in partnership with the British Library's Business & IP Centre (BIPC) offer tailored advice, free resources, training and events, both online and in-person to help you on your business journey.

Building on the legacy of Start-ups in London Libraries, a programme that helped thousands of start-ups across the capital from 2019 to 2021, Lewisham libraries are now part of the BIPC London Network that makes this support a permanent offering in five boroughs.

Since opening in 2022, the hub libraries in Catford, Deptford, Downham and Lewisham have welcomed people from all walks of life and helped aspiring as well as existing small businesses in the borough.

### Meet the BIPC Local Lewisham ambassadors

These are the local Lewisham business owners who have benefitted from support in Lewisham or at the British Library, and they are now passing on their experience to local entrepreneurs.

To find out more about how we can help you, come and say hello, or discover what's on offer online at

[lewisham.gov.uk/BIPC](http://lewisham.gov.uk/BIPC)

- David Bourroughs, founder of Buddies for All
- Esther Solomon-Turay, founder of Authentic Worth
- Hannah Drakeford, founder of Hannah Drakeford Design
- Jennifer McLean and Fiona Wedderburn-Graham, founders of Amaze Associates
- Mel Nichols, founder of Chayse Boys' Book Club.

## Taking action on anti-social behaviour

We are taking a support-led approach to reducing antisocial behaviour (ASB) in the borough. These plans are designed to protect our vulnerable residents and make the area feel safer and Council staff will be trained to provide education and support to residents first.

In response to rising antisocial behaviour and complaints, the Council has approved plans to tackle ASB across the borough, with a focus on hot spots in some areas.

The Public Space Protection Order (PSPO) is designed to reduce ASB and address the behaviours we get the most complaints about, such as alcohol related nuisance. One in four residents told us that they are concerned about ASB and crime and want this to be a focus for the Council.

Read more about the PSPO at [lewisham.gov.uk/psporder](http://lewisham.gov.uk/psporder)

The decision was taken on 8 May and is subject to the usual call-in period.

## It's never too late to learn

Our Adult Learning Service is holding an open day on Thursday 18 July 2024 between 1-7pm at Granville Park Adult Education Centre, SE13 7DU. You'll be able to visit the facilities, talk to subject specialists, take part in free drop-in activities, and enrol for courses starting in September.

Whether you're thinking about retraining for a new career, developing a hobby or learning a new language, this is the perfect opportunity to discover the wide variety of adult courses on offer in Lewisham.

Find out more at: [lewisham.gov.uk/adultlearning](http://lewisham.gov.uk/adultlearning)

Students from ages 5 - 11  
**MATHS & ENGLISH TUTORING**  
*Face to face tutoring*  
 ✓ small groups  
 ✓ daily homework  
 ✓ personalised learning  
 Building confident learners!  
 Call for a free assessment  
**07399322455**

**Catbytes Digital Buddies**  
 Could you help someone  
 • use their smartphone  
 • set up email  
 • fill in an online form?  
 100% of buddies report their work has a positive impact and rate the experience as good or excellent.  
**020 8314 4702**  
[info@catbytes.community](mailto:info@catbytes.community)  
[www.catbytes.community](http://www.catbytes.community)

**Catbytes Digital Drop-ins**  
 Would you like help using a computer or smartphone, accessing the internet or filling in an online form?  
 Our digital drop-ins are free and open to everyone. They run all over Lewisham all week round.  
**020 8314 4702**  
[info@catbytes.community](mailto:info@catbytes.community)  
[www.catbytes.community](http://www.catbytes.community)

**MOO SOOL ACADEMY OF MARTIAL ARTS SE6**  
**YUSOOL**  
 (KOREAN JUJITSU)  
 Classes for all ages: 5yrs+, Teens & Adults  
**\*FIRST CLASS FREE\***  
[www.moosoolacademy.com](http://www.moosoolacademy.com)  
[info@moosoolacademy.com](mailto:info@moosoolacademy.com)  
 t 07710407021

**THE STUDIO SE6**  
**YOGA • PILATES**  
[WWW.THESTUDIOSE6.COM](http://WWW.THESTUDIOSE6.COM)  
**E: info@thestudiose6.com**  
**T: 07961 440762**

DOWNHAM

# HEALTH AND LEISURE CENTRE



## COMING SUMMER 2024 BRAND NEW GYM

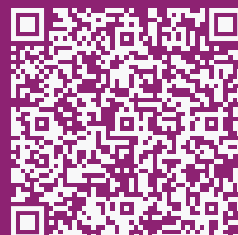
- Fully refurbished gym
- Brand new state-of-the-art fitness equipment
- Indoor cycling studio upgrade



For more details visit  
[LeisureCentre.com/DownhamRefurb](https://LeisureCentre.com/DownhamRefurb)



Scan here for more info



Discover Lewisham

SIGN UP

to our weekly newsletter  
[lewisham.gov.uk/signup](https://lewisham.gov.uk/signup)

# A summer of fun in Lewisham

With summer right around the corner, there's no better time to enjoy our green and vibrant borough. Here are just some of the things coming up...

Whether you want to relax in our award-winning parks, head down to an outdoor festival or explore the local cafe and arts and entertainment scene – there's something for everyone. Here are some highlights. We haven't been able to include everything, so head to [lewisham.gov.uk/discover](https://lewisham.gov.uk/discover) to find a longer list of activities and events for the months ahead.



Brockley Max Festival

### Outdoor festival fun

#### **Blythe Hill Fields Festival 2024**

Celebrate our diverse local community through music, performance, culture, food and fun. There's hope to make it the greenest and most community-focused festival ever! **Sunday 7 July. 12 noon–5pm. Free entry.** Blythe Hill Fields Entrances from Montacute Road, Blythe Hill Lane, Brockley View and Codrington Hill SE6 4UN. Find out more [www.blythehillfields.org.uk/festival-2024](https://www.blythehillfields.org.uk/festival-2024)

#### **Music, Jerk n Tings festival**

Family day of food and music

in the Horniman Gardens celebrating Caribbean culture. **Saturday 10 August. 1–6pm. Tickets: £15 adult, £10 child, free entry for Access companions and under 2s.** Horniman Museum and Gardens, SE23 3PQ.

#### **Brockley Max Festival**

Community arts festival with over eighty free events, featuring art exhibitions, live music, talks, workshops, film, poetry and loads more. Kicking off with the Opening Night by Brockley Station on Friday 31 May and

Discover Lewisham



ending with 'Art In The Park' on Hilly Fields on Saturday 8 June. Friday 31 May – Saturday 8 June. Various venues in Brockley, Ladywell, Honor Oak and Crofton Park. Find out more [www.brockleymax.co.uk](http://www.brockleymax.co.uk)



**Taste of the Caribbean**  
 Taste of the Caribbean Food & Drink Festival is a celebration of different cultures and amazing cuisines as well as live music, cooking demonstrations, funfair rides and activities. Saturday 6 and Sunday 7 July. Open from 10am. Paid event. Beckenham Place Park. For more info visit: [tasteofcaribbeanuk.com/product/beckenham](http://tasteofcaribbeanuk.com/product/beckenham)



**Daytimers at the Horniman Festival**  
 Join a day festival celebrating South Asian music, food, artistry, talks, workshops and more. Saturday 15 June. 2–7pm. Tickets: Adults £20, Child £15, free entry for Access companions and under 2s. Horniman Museum and Gardens, SE23 3PQ.



**Hilly Fields Midsummer Fayre**  
 Arts, crafts, bric-a-brac, performances, the dog show, the prize draw, music, children's competitions, tea and cakes, delicious food, lovely people, beer... and much more. Saturday 22 June. 12 noon–5pm. Hilly Fields, Brockley SE4 1QA. Find out more: [brockleysociety.org.uk/hilly-fields-midsummer-fayre](http://brockleysociety.org.uk/hilly-fields-midsummer-fayre)



**So Last Century vintage market**

**Sustainable Lewisham**

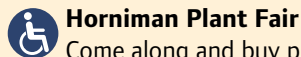


**Cycling workshops and support with Lewisham Cyclists**  
 Lewisham Cyclists run community cycle workshops, group rides, Dr Bikes and also offer cycle skills training and bike loans. They also run the Lewisham Family Cycle Library, a local resource offering loans of cargocycles and other equipment to help you transport children and cargo such as children's cycle seats and trailers. Grove Park Youth Club, Marvels Lane SE12 9PR and The Scout Hut, SE8 5NU and other venues across the borough. Find out more: [lewishamcyclists.org.uk](http://lewishamcyclists.org.uk)

**Summer gardening club**

Join this free lunchtime gardening club and discover how to grow your own veg, learn valuable gardening skills and enjoy a horticultural oasis in the heart of Deptford. Tuesdays and Thursdays

until September. 11am–1pm. Suitable for anyone over 18 – no experience is necessary. The Albany, Deptford, SE8 4AG. RSVP by emailing [gardening@thealbany.org.uk](mailto:gardening@thealbany.org.uk)



**Horniman Plant Fair**  
 Come along and buy plants from small and independent nurseries, listen to a series of talks on the bandstand or take part in a tour of the gardens. Saturday 6 July. 11am–4pm. Tickets: Adult £10, Child £2.50. Horniman Museum and Gardens, SE23 3PQ



**So Last Century vintage market**  
 Is back in Beckenham Place Park with their popular Vintage Market at the Mansion with thousands of amazing things to discover and buy. There will be street food stalls, coffee van, and the 'The Alvar Treefrogs' band busking under the park's great oak tree.



Dinosaur rEvolution

**Perfect for kids**



**Innovated Minds Academy**  
 Offering youth development programmes, including music production training, wellbeing services, a soup kitchen and hand out donations. Lewisham CommUnity Space, Unit 17, Lewisham Shopping Centre, Molesworth St, London SE13 7HB

**Come As You Are**

A free weekly youth takeover. Join workshops in music, drama, dance, creative writing and more, or just come along and hang out with games, table tennis and free snacks. Tuesdays during term time. 3.30–8pm. Suitable for ages 12–24 years. The Albany, Deptford, SE8 4AG.

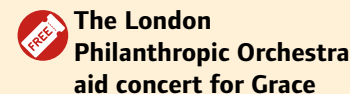


**Philo - create + play**  
 Philo is a free play and arts space for families with children aged up to 11. Light lunches, art and movement workshops, outdoor and indoor games and access to a diverse library are all available. Tuesdays during term time. 10.30am–5pm. Located at the Grove Park Youth Club, Marvels Lane, SE12 9PR



**Dinosaur rEvolution**  
 Did T-rex actually have feathers? Find out in this fascinating

**Free art and music**



**The London Philanthropic Orchestra aid concert for Grace**  
 Aid concert for Grace (Greenwich Refugee Aid & Community Enterprise) featuring some of the world's best-loved music, by composers including Rossini, Mahler, Sibelius and Satie. Sunday 2 June. From 4.30pm. Free admission, donations welcome at the door or online via [bit.ly/lpograce](http://bit.ly/lpograce). Our Lady of Lourdes Church, Burnt Ash Hill, Lee SE12 0AE.



Taste of the Caribbean

Step-free entrance, and level access throughout the ground floor rooms. Dogs welcome indoors. Monday 26 August (Bank Holiday). 10am–5pm.



**Brockley Open Studios**  
 This yearly art event takes place all over Brockley showcasing an inspirational variety of work in one weekend. Over fifty artists will open their gardens, homes and studios to the public. A great opportunity to see eclectic art and immerse oneself into the community. Saturday 6 and Sunday 7 July. 1–6pm. Find out more: [brockleyopenstudios.co.uk/bos-2024](http://brockleyopenstudios.co.uk/bos-2024)



**Join Friends of Blythe Hill**  
 Join voluntary community group, Friends of Blythe Hill Fields and learn more about their Free Annual Summer Festival, their Biodiversity group, Tree Care Days, and Nature's Gym Days. Free event. Find out more: [www.blythehillfields.org.uk/events](http://www.blythehillfields.org.uk/events)

family-friendly exhibition featuring large model animatronics and colourful artworks!  
 Open daily until 3 November. 10am–5.30pm. Tickets: Child £6, Adult £9, Family tickets available, Universal Credit claimants £1. Horniman Museum and Gardens, SE23 3PQ

**Fun nights out**

 **Bangers & Nash Comedy Night**

Join The Albany for their new monthly comedy night, showcasing the best of the UK comedy scene. Resident host Chantel Nash, finalist in the BBC New Comedy Awards 2023, will be bringing the laughs.  
 Friday 14 June and Friday 5 July. The Albany, Deptford, SE8 4AG

**Weekly roller fun**

Get your skates for a popular roller disco, complete with lights, a disco playlist and plenty of room to whizz (or stumble) around. All abilities are welcome, just bring your own skates!  
 Third Thursday of every month. 7–10pm. Tickets £5 per person. Main Hall, Deptford Lounge, 9 Giffin St, Deptford, SE8 4RJ



Chantel Nash



**Visit Beckenham Place Park this Summer:**

Our award-winning Beckenham Place Park is the largest of our 47 parks in Lewisham, spanning 96 hectares (equivalent to 91 Wembley stadium pitches!). It is supremely joyful this time year with bird song, park visitors enjoying the scenery, flowers in bloom and many exciting events and activities.

**What's on:**

We have a new exciting summer event: Taste of the Caribbean on 6 and 7 July (see page 20).  
 Along with our bigger festivals, enjoy old favourites such as the ever-popular weekly Sunday Food and Farmers Market, and street food and music event, Peckish, on Thursdays.

**Enjoy free events:**

- Monthly Dr Bike free bike checks
- Weekly park runs
- Weekend music at the Homestead courtyard from mid-May to September
-  Pre-book swimming and or paddle-boarding sessions by visiting: [www.ptpcoaching.co.uk/bpp-home](http://www.ptpcoaching.co.uk/bpp-home)
-  In the Homestead Courtyard you'll find Nor, a gift shop with a wellbeing/craft space, and Eddie's Dog Shop and Grooming Parlour
-  In the Mansion you'll also find a range of wellbeing workshops and spaces for hire

Find out more: [beckenhamplacepark.com](http://beckenhamplacepark.com)

**Foster for Lewisham**

Lewisham Council is looking for foster carers to make a difference in a young person's life



No need to book, just come in!

Walk-in information mornings every Monday 10am–12 noon

-  Where: Fostering Hub, 45 Bromley Rd, SE6 2UA
-  Visit: [lewisham.gov.uk/fostering](http://lewisham.gov.uk/fostering)
-  Freephone: 0800 015 0129
-  [fosteringrecruitment@lewisham.gov.uk](mailto:fosteringrecruitment@lewisham.gov.uk)






**Unpaid Carers... ..we want to hear from you**



**Join our Unpaid Carer Forum**

We want support for unpaid carers to be the best it can be.

-  Tell us how we can give you and other carers the support you need
-  Help improve the services and support accessed by unpaid carers
-  Hear about news, services and more that affect you and other unpaid carers

Last Tuesday of the month, 1–3pm  
 Civic Suite, Catford or join online

We hope to see you there – email [proudtocare@lewisham.gov.uk](mailto:proudtocare@lewisham.gov.uk) to let us know you're coming.



10 - 16 JUNE 2024

# SEEN LEWISHAM



Eddie Nestor  
MBE and  
Robbie Gee

A vibrant festival celebrating ethnically diverse artists is coming to the Broadway this June.

**SE**EN Lewisham will be hitting the Broadway stages with a packed line-up including Tippa Irie, Richard Blackwood, Eddie and Robbie. The festival runs from Monday 10 to Sunday 16 June and will be a real showcase of the borough's rich and diverse talent.

In partnership with the London Borough of Lewisham and Olivier-nominated arts company Nouveau Riche, SEEN Lewisham is funded by Lewisham Council, the Mayor of London, and the UK Government's Shared Prosperity Fund.

The SEEN Lewisham programme highlights local talents who responded to a February call for submissions. Selected artists receive grants and mentoring from industry experts to bring their acts to life. Don't miss these exciting performances.

Tonga, Dancer



**Everyone is invited!**  
Share your festival moments by tagging us and using #SEENLewisham2024 in your photos.

## Theatre

**Monique Day – Mirror Mirror**  
Mirror Mirror explores racial identity, family dynamics, and pursuing dreams amidst prejudice and societal pressure. Emily, a Black professional, battles identity, debt, and upholding a middle-class facade. Her life shifts when she meets Abigail, an ambitious student facing similar challenges reflecting Emily's past.



Monique Day,  
Director

**Amaarah Roze – This Is Embarrassing**  
Embarrassment. This production will explore what it is, where it comes from and, why it's here. This Is Embarrassing is a joyful explosion of vulnerability, taking up space and being okay with being seen. A collaboratively written, retelling of real life experiences turning what was meant for humiliation into celebration.

**Zahra Dalilah – Anatomy of a Black Rebellion**  
Anatomy of a Black Rebellion is a queer takeover of the classic tale of rebellion on the plantation, which follows three women and gender non-conforming revolutionary leaders on a journey towards love, light and liberation.

## Dance

**Masumi Saito**  
Masumi Saito and An-Ting are creating a music and dance performance on death, nature, and spirit. This fusion draws from Japanese and Taiwanese cultures, offering a contemplative space for audiences to reflect on this challenging topic.

**Amanda Thompson – The Nest**  
A multi-style dance and circus piece incorporating elements of text and narration, The Nest explores inquisitiveness, play, and awe and wonder about nature, no matter where it occurs.

## Special events

**Show & Sell market**  
SEEN Lewisham will host Black and Global Majority owned entrepreneurs, sellers, and makers at our Show & Sell event. No need to book tickets, just drop into the Broadway on Tuesday 11 June from 11am-7pm

**Lewisham Libraries Reading Room**  
Visit Lewisham Libraries Reading Room in the heart of the theatre for stories, songs, crafts and poetry. Take a moment to relax and read a book, join a children's activity, chat with library staff, and sign up to the library. Free and for all ages, 11am-5pm throughout the festival.

## Music and more

**Sahra Gure**  
Sahra Gure is an accomplished singer, songwriter and musician with remarkable career highlights including performing at the London Jazz Festival, Dimensions, We Out Here and now SEEN Lewisham.

**Tendo**  
Tendo is a versatile music artist, community project coordinator, and creative. Since joining Lewisham Music in 2022, he has contributed to various Albany projects, including the film Deep Waters a project that combines music, poetry, and film to explore the depth and vulnerability in art. See him perform during the festival.

**Set, costume and lighting**  
Kanar Iessa (Set and Costume

Design) and Valeria Salinas Toro (Sound and lighting) were also selected to take part in the mentoring programme and will be working hard bring the festival performances to life.

**Black Wall Street, The Dreamland**  
The latest production by Khareem Jamal on Friday 14 June. Taking place in Tulsa, Oklahoma, in 1921, the production brings to life the extraordinary tale of Greenwood, a predominantly black neighbourhood within Tulsa.

**Kings of UK Comedy**  
Don't miss this Father's Day weekend event on Saturday



15 June, featuring Richard Blackwood, Curtis Walker, Slim, Kevin J, and Christopher Savage. It's part of the closing weekend of SEEN Lewisham, with special guest Tippa Irie.

**Lewisham Goes Gospel**  
Helping to close the show will be Lewisham Goes Gospel, a choir brought together by Let's Go Gospel a dynamic gospel choir who will be setting the stage alight with a one-off performance.

SEEN Lewisham events will also take place at venues across the borough, with more acts and events to be announced. Scan the QR code to stay updated on the lineup and purchase tickets or visit [broadwaytheatre.org.uk/seen-lewisham](http://broadwaytheatre.org.uk/seen-lewisham)



# Out and about

From flowers in bloom to upgraded playgrounds, there's lots to discover and enjoy in our award winning green spaces this summer

## Tiny forests, big fun!

Over the spring, three more Tiny Forests have been planted across the borough at Chinbrook Meadows, Forster Memorial Park and Blythe Hill Fields. Lewisham now has five of these innovative Tiny Forests, more than any other London borough!

We were very excited to be joined at the Blythe Hill Fields planting by the BBC's Blue Peter team!

Tiny Forests are about the size of a tennis court and are an attractive location for both wildlife and people to provide a range of benefits in the fight against climate change. This planting method encourages accelerated forest development and uses no chemicals or fertilisers. Each Tiny Forest is unique! All 600 trees planted in each one are selected carefully for the soil and site conditions to achieve the most successful growth possible.

Please do enjoy them around the borough to relax, play or learn and huge thanks to all the Lewisham primary school classes who helped us plant!

We are always looking for more volunteers to help our Tiny Forests thrive. Visit [tinyforest.earthwatch.org.uk](http://tinyforest.earthwatch.org.uk) to sign up.

## Improving Lewisham's playgrounds

In recent months, some fantastic new playgrounds have opened across the borough at Lewisham Park, Mayow Park and Folkestone Gardens. These have been funded by developer money through our innovative NCIL programme with additional funding from our partners.

Each of these new playgrounds are designed



BBC's Blue Peter team at the Blythe Hill Fields planting

to be inclusive with something for everybody including equipment that encourages active movement and climbing skills, basket and shared swings and equipment with sensory and tactile play panels.

Folkestone Gardens is the final playground to open as part of the £700,000 investment to upgrade three popular Deptford parks for local children to enjoy – the other two are Sayes Court and Evelyn Green.

We're excited to see the new Hatcham Gardens playground open next! Thank you to all our community groups who have supported these schemes and helped make them happen.



Beckenham Place Park



Brenda Dacres, Mayor of Lewisham, at the opening of Mayow Park

## Get involved!

We are very proud of our many award-winning parks in Lewisham. Thank you to our partners Glendale and our fantastic friends and community groups who contribute so much to make our green spaces special. There are lots of ways to get involved to support Lewisham's biodiversity and wildlife:

- 1. Join a Friends Group** – visit our website to find out more [lewisham.gov.uk/friendsofparks](http://lewisham.gov.uk/friendsofparks)
- 2. Volunteer** in rivers and with Nature's Gym – visit the Nature Conservation Lewisham website: [natureconservationlewisham.co.uk](http://natureconservationlewisham.co.uk)
- 3. Report your sightings** to Greenspace Information for Greater London (GiGL) Visit the GiGL website: [gigl.org.uk](http://gigl.org.uk)

## Be a responsible park user this summer

- No fires or BBQs in our parks
- Please take your rubbish home with you and help us reduce waste
- Plastic or foil confetti and helium balloons can be difficult to dispose of and can cause harm to wildlife
- Please pick up after your dog and keep on leads in restricted areas

## Beckenham Place Park

Beckenham Place Park is our largest park in Lewisham. Late May is peak flower time with lots in bloom – visit the gardens by the Homestead to enjoy the display! There's plenty of fun for families with activities at the lake, nature and craft workshops and the playground and sandpit for younger children.

There are two brand new summer events this year – Taste of the Caribbean in July and Summer Time Live in August.

## More information

For more details about events, the vibrant markets, lovely shops, free activities, music and park runs, please visit [beckenhamplacepark.com](http://beckenhamplacepark.com)

## Improvements to the east side of the park

The £3million+ improvements are progressing at a pace and include:

- improvements to the river with increased community volunteering opportunities
- extensive new landscaping, planting and rewilding to reduce flood risk
- new playground and multi-use game area
- an improved welcoming main entrance from Old Bromley Road
- new footpaths and wayfinding
- off-road cycling trail and outdoor gym to support health and fitness
- new park café opportunity with publicly accessible toilets

# Support with the cost of living

People in Lewisham and across the country are facing cost of living pressures. Make sure you're getting any extra help you may be entitled to.

Research suggests that there are £23 billion of unclaimed benefits every year in the UK. You could be missing out.

We've launched a new tool called Better Off Lewisham. **Better Off Lewisham** helps you to work out the benefits you're entitled to and shows you how to apply for them online. You can also use Better Off to help you to:

- appeal benefit decisions.
- search for jobs and volunteering opportunities and record your job search activities.
- Get advice and information on a range of topics, including childcare and debt advice.
- find budgeting tools to help you manage your money.



If you need help to use Better Off Lewisham, or to complete an application, you can securely share your account with someone else, such as an advisor or a friend. It's also available in over 130 languages. To get started, visit [lewisham.betteroff.org.uk](http://lewisham.betteroff.org.uk)

## Healthy Start

If you receive benefits, you may be eligible for cash support to buy milk and healthy food for your young children.



Healthy Start is worth up to £280 a year per child, and can help families to buy food and milk for their children if they are under 4 years old, or for those over 10 weeks pregnant.

If you think you might be eligible please visit [healthystart.nhs.uk](http://healthystart.nhs.uk)

## Worrying about money?

[worryingaboutmoney.co.uk/lewisham](http://worryingaboutmoney.co.uk/lewisham) provides lots of help and resources that can help you if you're worrying about your finances. It's recently been updated for 2024 and there are translations in Spanish, Arabic and Kurdish Sorani available to download.



## Are you caring for a relative or friend?

You can now visit our dedicated service for Unpaid Carers in person at Glass Mill Leisure Centre.

**Get free support, advice and information including:**

- Emotional and practical support
- Access to financial support and advice
- Peer support
- Free training courses ...and more

Join us for Carers Week!  
10-16 June 2024



Visit the friendly team in the Atrium at Glass Mill Leisure Centre, Monday to Friday, 9am-5pm and let them support you to continue caring for others.

**You can also contact:**

Email: [ucwellbeing@imago.community](mailto:ucwellbeing@imago.community)

Call: 0300 373 5769

**BETTER**

**IMAGO**  
Maximising Wellbeing of Unpaid Carers



2.5 million repeat prescriptions ordered in London



South East London

## Have you ordered yours?

Scan to find out more about the NHS App



[www.nhs.uk/nhs-app](http://www.nhs.uk/nhs-app)



# Acting boldly on climate change

In 2019, Lewisham Council was one of the first local authorities to declare a climate emergency. Since then, we've made some great progress towards our ambition for Lewisham to be net zero carbon by 2030.

**W**e know there's more to be done. Our Climate Emergency Action Plan 2024 sets out how we will work towards Lewisham becoming a net zero carbon borough by 2030. We'll do this by playing our part to reduce emissions that are causing long-term changes to our climate. We'll also do what we can to minimise the impact of heatwaves, flooding and storms on our communities.



You can read our full Climate Emergency Action Plan by visiting [lewisham.gov.uk/climate](http://lewisham.gov.uk/climate)

## Climate emergency: our core priorities

### Leading by example



We'll put climate action at the heart of our work by decarbonising Council buildings, schools and our fleet of council vehicles. This is done in several ways, such as removing gas boilers and introducing heat pumps, installing solar panels, improving insulation and lighting, measuring and reporting on carbon emissions. We'll also support our staff to understand the connection between their work and the climate.



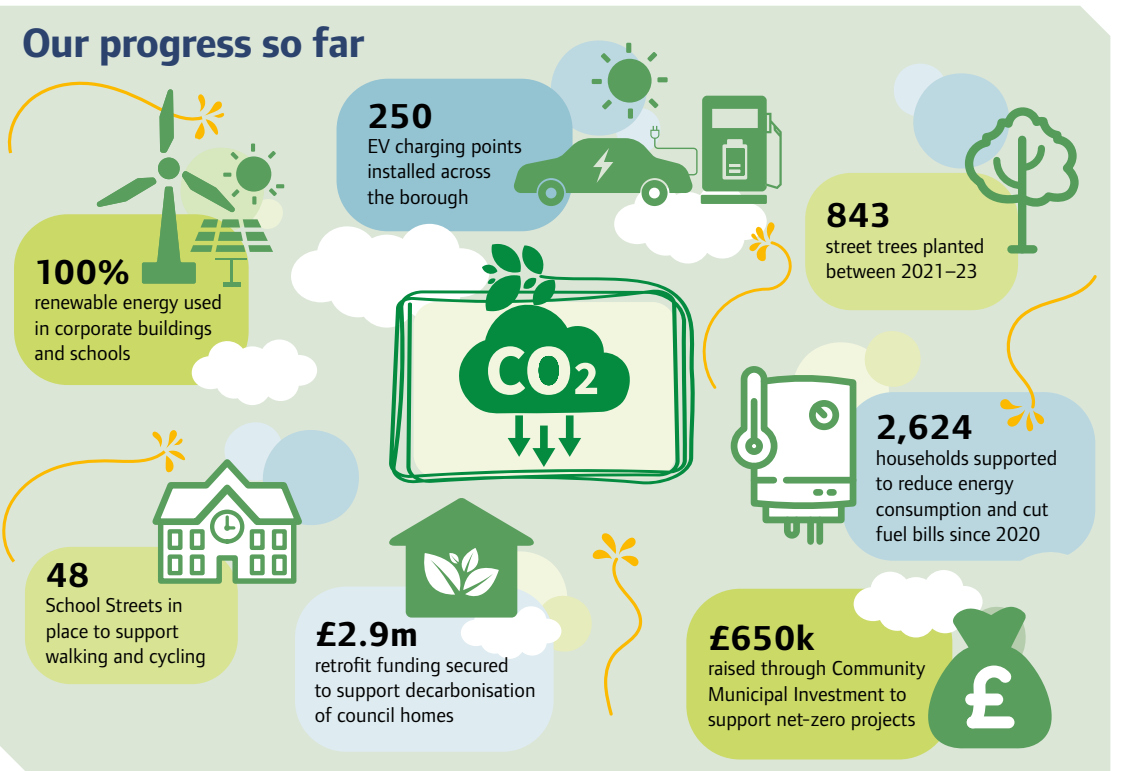
### Sustainable housing

We'll work towards decarbonising our Council housing stock, give practical help to residents struggling to heat their homes, improve the quality of privately rented housing, and secure investment in low carbon energy infrastructure.



### Decarbonised transport

We'll minimise the need for cars and other vehicles driving in and through the borough by creating better alternatives, such as walking, cycling and public transport. We'll also seek to improve electric and sustainable transport networks and infrastructure.



### Greener, adaptive Lewisham

Together with partners, we'll adapt and make changes to enable us to deal with some of the impacts of climate change, for example by reducing flood risks and making the borough a greener place to live.



### Local action: sustainable energy in schools

Dalmain Primary School was the first school in Lewisham to replace its old gas boiler with a new air source heat pump. The pump uses heat from the air to generate heating and hot water, helping support the transition away from greenhouse gases. The installation allowed the students to learn more about the Climate Emergency and how new technology and infrastructure can help tackle these challenges.

## What you can do to help

Climate change can sometimes feel like an issue that's just too big, making it hard to know where to start. The reality is that we all have a role to play, and even small actions can make a big difference.

### Here are some practical ways to make change:

- Spread the word and encourage your friends and family to reduce their carbon footprint
- Support tree planting in the borough
- Cut your home energy bills
- Try a planet-friendly diet
- Reduce car use and choose sustainable ways of getting around
- Reduce waste

Taking action has the potential to enrich our lives – giving us cleaner air, warmer homes and healthier lifestyles, creating new opportunities for jobs, and making Lewisham a more pleasant and healthy place to live and visit.

# Spreading the #TreeLove in Lewisham

Lewisham Council has been working in partnership with Lewisham-based charity Street Trees for Living to plant street trees since 2012.



## Why are trees so important?

- Encourage biodiversity and wildlife
- Reduce flood risk
- Bring communities closer
- Improve mental and physical health
- Reduce toxic air and absorb traffic noise

Last year over 650 street trees were planted across the borough, more than any other community group in London.

Our residents are key to our tree planting projects and we now have over 1,000 community volunteers in Lewisham. This has led to a very high tree survival rate of 96% here compared to a national survival rate of 70%. This is the massive difference that community involvement makes!

We always select the species of our trees very carefully to make sure that they suit the location. We also plant trees where they're needed most. For example, we prioritised the

areas that needed more trees and could be at higher risk of climate change, increasing tree canopy cover in the borough by 14,760 square metres just in the last 12 months!

[lewisham.gov.uk/streettrees](http://lewisham.gov.uk/streettrees)  
[streettreesforliving.org](http://streettreesforliving.org)

## Meet Jack, one of our Lewisham Tree Officers!

"I'm a Tree Services Officer and my job is to inspect and monitor all our trees in the borough. I liaise with Street Trees for Living and other organisations and community groups to identify locations, recommend suitable species and organise logistics for planting.

A 'typical' day is always a bit of a mixture! I start the day dealing with emails and enquiries from residents and then spend a lot of time out and about doing inspections.

I love spending time in our beautiful parks being wonderstruck by nature! It's a privilege working in this role focused on protecting and nurturing trees every day."

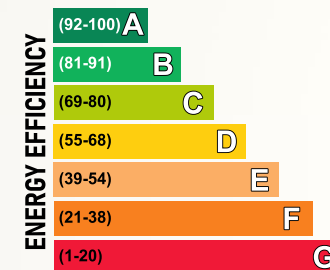


# FREE BOILER AND INSULATION



Are you using a very old boiler?  
Are you using electric heaters?  
Do you live in a house with an EPC rating of E, F or G?

You can be eligible for a grant to upgrade your heating and insulation, and up to 100% funding for a heat pump at off gas properties, under the Government ECO4 Grant.



## Criteria To Qualify

Anyone in a household needs to be in receipt of the following benefits

- Income-based Jobseeker's Allowance (JSA)
- Income-related Employment and Support Allowance (ESA)
- Working Tax Credit
- Child Tax Credits
- Universal Credit (UC)
- Housing Benefit (only for first-time central heating jobs)
- Pension Credit – guarantee or Savings Credit
- Child Benefit with certain income

**OR** If your household gross income is less than £31,000 per year.

**OR** Anyone in household Identified by doctor or GP with health condition of cardiovascular, respiratory, immunosuppressed or limited mobility related.



External wall insulation Grant & 100% free internal wall insulation



## Greenland Energy Services Ltd

102 Brockley Rise, London SE23 1LN  
info@greenlandenergy.co.uk  
www.greenlandenergy.co.uk

**0208 314 1028 / Out of Hours 07497 376031**



scan me for more info

# Introducing Lewisham's new Young Mayor!

**Bilvilyn Asamoah, 13, was elected as Lewisham's new Young Mayor earlier this year following an election in schools and colleges across the borough.**

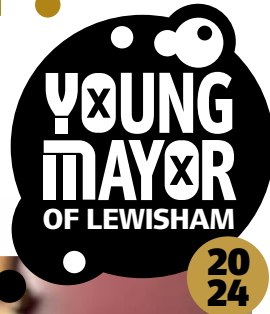
We asked Bilvilyn to tell us a bit about her new role and her plans for young people across the borough.

“ I'd like to show my deepest gratitude to everyone who voted for me, encouraged me and shared my campaign posts. I wouldn't be here without you.

As Young Mayor, I would like to find ways for young people to be able to get more jobs. Many people feel as though school does not prepare them for the 'real world'. I want us to be able to try to get the job we dream of or even be our own bosses.

In Year 10 most schools do work experience to improve students' skills and test their career ideas. However, I am only 13 and I haven't yet been able to do this. I feel that this isn't enough and more needs to be done.

Secondly, I want to involve even more young people in the decisions that affect them. I want nobody to feel unheard or overlooked. It's important that young people get a say in matters that concern them. I'd like to do this by visiting schools in Lewisham



Bilvilyn Asamoah  
Young Mayor  
of Lewisham

Follow the Young Mayor on

@lewisham\_young\_mayor

@lewishamYCP.

to hear what young people want.

Finally, I'd like to investigate ways to enhance learning experiences in schools. One of the main reasons I ran for Young Mayor is because I believe that more people need to acknowledge the benefits of school and I am dedicated to making this happen. I am so excited to begin this journey with everyone and I am going to prove that you made the right person Young Mayor. I'll keep you updated!

## Find out more and join us!

If you're a young person aged over 11 and interested in politics or getting involved in the community, why not consider volunteering as one of the young mayor's young advisors? Contact [katy.brown@lewisham.gov.uk](mailto:katy.brown@lewisham.gov.uk) to find out more.



Lewisham's directly elected Mayor, Brenda Dacres, represents the whole borough. Contact her at [brenda.dacres@lewisham.gov.uk](mailto:brenda.dacres@lewisham.gov.uk)

Please check beforehand whether your Councillor is holding in person surgeries. Visit [lewisham.gov.uk/mayorandcouncil](http://lewisham.gov.uk/mayorandcouncil) or call 020 8314 6000 and ask for 'operator'.

### Bellingham

**Clr Rachel Onikosi**  
[rachel.onikosi@lewisham.gov.uk](mailto:rachel.onikosi@lewisham.gov.uk)  
 ☎ 020 8314 9021  
**Clr Jacq Paschoud**  
[jacq.paschoud@lewisham.gov.uk](mailto:jacq.paschoud@lewisham.gov.uk)  
 ☎ 020 8291 5729

### Blackheath

**Clr Juliet Campbell**  
[juliet.campbell@lewisham.gov.uk](mailto:juliet.campbell@lewisham.gov.uk)  
 ☎ 020 8314 9386  
**Clr Amanda de Ryk**  
[amanda.deryk@lewisham.gov.uk](mailto:amanda.deryk@lewisham.gov.uk)  
 ☎ 020 8314 3789  
**Clr Luke Warner**  
[luke.warner@lewisham.gov.uk](mailto:luke.warner@lewisham.gov.uk)  
 ☎ 020 8314 8300

### Brookley

**Clr Sian Eiles**  
[sian.eiles@lewisham.gov.uk](mailto:sian.eiles@lewisham.gov.uk)  
 ☎ 020 8314 3415  
**Clr Ayesha Lahai-Taylor**  
[ayesha.lahai-taylor@lewisham.gov.uk](mailto:ayesha.lahai-taylor@lewisham.gov.uk)  
 ☎ 020 8314 6022  
**Clr Stephen Penfold**  
[stephen.penfold@lewisham.gov.uk](mailto:stephen.penfold@lewisham.gov.uk)  
 ☎ 020 8314 8817

### Catford South

**Clr Natasha Burgess**  
[natasha.burgess@lewisham.gov.uk](mailto:natasha.burgess@lewisham.gov.uk)  
 ☎ 020 8314 3671  
**Clr James Royston**  
[james.royston@lewisham.gov.uk](mailto:james.royston@lewisham.gov.uk)  
 ☎ 020 8314 6696  
**Clr Eva Stamirowski**  
[eva.stamirowski@lewisham.gov.uk](mailto:eva.stamirowski@lewisham.gov.uk)  
 ☎ 07392 860305

### Crofton Park

**Clr Tauseef Anwar**  
[tauseef.anwar@lewisham.gov.uk](mailto:tauseef.anwar@lewisham.gov.uk)  
 ☎ 020 8314 9930  
**Clr Chris Barnham**  
[chris.barnham@lewisham.gov.uk](mailto:chris.barnham@lewisham.gov.uk)  
 ☎ 020 8314 9896  
**Clr Carol Webley-Brown**  
[carol.webley-brown@lewisham.gov.uk](mailto:carol.webley-brown@lewisham.gov.uk)  
 ☎ 020 8314 6713

### Deptford

**Clr Dawn Atkinson**  
[dawn.atkinson@lewisham.gov.uk](mailto:dawn.atkinson@lewisham.gov.uk)

☎ 020 8314 6538

**Clr Rosie Parry**  
[rosie.parry@lewisham.gov.uk](mailto:rosie.parry@lewisham.gov.uk)  
 ☎ 020 8314 6179  
**Clr David Walker**  
[david.walker@lewisham.gov.uk](mailto:david.walker@lewisham.gov.uk)  
 ☎ 020 8314 7443

### Downham

**Clr Andre Bourne**  
[andre.bourne@lewisham.gov.uk](mailto:andre.bourne@lewisham.gov.uk)  
 ☎ 07875 082340  
**Clr Coral Howard**  
[coral.howard@lewisham.gov.uk](mailto:coral.howard@lewisham.gov.uk)  
 ☎ 020 8314 6310  
**Clr Oana Olaru**  
[oana.olaru@lewisham.gov.uk](mailto:oana.olaru@lewisham.gov.uk)  
 ☎ 020 8314 7783

### Evelyn

**Clr Will Cooper**  
[will.cooper@lewisham.gov.uk](mailto:will.cooper@lewisham.gov.uk)  
 ☎ 020 8314 3072  
**Clr Rudi Schmidt**  
[rudi.schmidt@lewisham.gov.uk](mailto:rudi.schmidt@lewisham.gov.uk)  
 ☎ 020 8314 8848  
**Clr Hau-Yu Tam**  
[hau-yu.tam@lewisham.gov.uk](mailto:hau-yu.tam@lewisham.gov.uk)  
 ☎ 020 8314 6001

### Forest Hill

**Clr Peter Bernards**  
[peter.bernards@lewisham.gov.uk](mailto:peter.bernards@lewisham.gov.uk)  
 ☎ 020 8314 9927  
**Clr Sophie Davis**  
[sophie.davis@lewisham.gov.uk](mailto:sophie.davis@lewisham.gov.uk)  
 ☎ 020 8314 3493  
**Clr Billy Harding**  
[billy.harding@lewisham.gov.uk](mailto:billy.harding@lewisham.gov.uk)  
 ☎ 020 8314 7966

### Grove Park

**Clr Suzannah Clarke**  
[suzannah.clarke@lewisham.gov.uk](mailto:suzannah.clarke@lewisham.gov.uk)  
 ☎ 020 8314 6944  
**Clr Mark Jackson**  
[mark.jackson@lewisham.gov.uk](mailto:mark.jackson@lewisham.gov.uk)  
 ☎ 020 8314 8390  
**Clr Hilary Moore**  
[hilary.moore@lewisham.gov.uk](mailto:hilary.moore@lewisham.gov.uk)  
 ☎ 020 8314 7886

### Hither Green

**Clr Yemisi Anifowose**  
[yemisi.anifowose@lewisham.gov.uk](mailto:yemisi.anifowose@lewisham.gov.uk)  
 ☎ 020 8314 8004

### Mark Ingleby

[mark.ingleby@lewisham.gov.uk](mailto:mark.ingleby@lewisham.gov.uk)  
 ☎ 020 8698 8562  
**Clr Kim Powell**  
[kim.powell@lewisham.gov.uk](mailto:kim.powell@lewisham.gov.uk)  
 ☎ 020 8314 2051

### Ladywell

**Clr Bill Brown**  
[bill.brown@lewisham.gov.uk](mailto:bill.brown@lewisham.gov.uk)  
 ☎ 020 8314 9821  
**Clr Laura Cunningham**  
[laura.cunningham@lewisham.gov.uk](mailto:laura.cunningham@lewisham.gov.uk)  
 ☎ 020 8314 8011  
**Clr Liz Johnston-Franklin**  
[liz.johnston-franklin@lewisham.gov.uk](mailto:liz.johnston-franklin@lewisham.gov.uk)  
 ☎ 020 8314 7985

### Lee Green

**Clr Ese Erheriene**  
[ese.erheriene@lewisham.gov.uk](mailto:ese.erheriene@lewisham.gov.uk)  
 ☎ 020 8314 8022  
**Clr Eva Kestner**  
[eva.kestner@lewisham.gov.uk](mailto:eva.kestner@lewisham.gov.uk)  
 ☎ 020 8314 8031  
**Clr James Rathbone**  
[james.rathbone@lewisham.gov.uk](mailto:james.rathbone@lewisham.gov.uk)  
 ☎ 020 8314 7524

### Lewisham Central

**Clr Edison Huynh**  
[edison.huynh@lewisham.gov.uk](mailto:edison.huynh@lewisham.gov.uk)  
 ☎ 020 8314 8224  
**Clr Aliya Sheikh**  
[aliya.sheikh@lewisham.gov.uk](mailto:aliya.sheikh@lewisham.gov.uk)  
 ☎ 020 8314 8245

### New Cross Gate

**Clr Aisha Malik-Smith**  
[aisha.malik-smith@lewisham.gov.uk](mailto:aisha.malik-smith@lewisham.gov.uk)  
 ☎ 020 8314 3496  
**Clr Liam Shrivastava**  
[liam.shrivastava@lewisham.gov.uk](mailto:liam.shrivastava@lewisham.gov.uk)  
 ☎ 020 8314 8298

### Perry Vale

**Clr John Paschoud**  
[john.paschoud@lewisham.gov.uk](mailto:john.paschoud@lewisham.gov.uk)  
 ☎ 020 8314 3437  
**Clr Sakina Sheikh**  
[sakina.sheikh@lewisham.gov.uk](mailto:sakina.sheikh@lewisham.gov.uk)  
 ☎ 020 8314 7963  
**Clr Susan Wise**  
[susan.wise@lewisham.gov.uk](mailto:susan.wise@lewisham.gov.uk)  
 ☎ 020 8314 2214

### Rushey Green

**Clr Louise Krupski**  
[louise.krupski@lewisham.gov.uk](mailto:louise.krupski@lewisham.gov.uk)  
 ☎ 020 8314 8983  
**Clr John Muldoon**  
[john.muldoon@lewisham.gov.uk](mailto:john.muldoon@lewisham.gov.uk)  
 ☎ 020 8314 9058  
**Clr James-J Walsh**  
[james-j.walsh@lewisham.gov.uk](mailto:james-j.walsh@lewisham.gov.uk)  
 ☎ 020 8314 9948

### Sydenham

**Clr Chris Best**  
[chris.best@lewisham.gov.uk](mailto:chris.best@lewisham.gov.uk)  
 ☎ 020 8314 8907  
**Clr Liam Curran**  
[liam.curran@lewisham.gov.uk](mailto:liam.curran@lewisham.gov.uk)  
 ☎ 020 8314 6937  
**Clr Jack Lavery**  
[jack.lavery@lewisham.gov.uk](mailto:jack.lavery@lewisham.gov.uk)  
 ☎ 020 8314 6692

### Telegraph Hill

**Clr Paul Bell**  
[paul.bell@lewisham.gov.uk](mailto:paul.bell@lewisham.gov.uk)  
 ☎ 020 8314 7047  
**Clr Joan Millbank**  
[joan.millbank@lewisham.gov.uk](mailto:joan.millbank@lewisham.gov.uk)  
 ☎ 020 8314 6929  
**Clr Luke Sorba**  
[luke.sorba@lewisham.gov.uk](mailto:luke.sorba@lewisham.gov.uk)  
 ☎ 020 8314 9984

### Members of parliament

**Vicky Foxcroft MP**  
 Lewisham Deptford  
 ☎ 020 8469 4638  
 @ vicky.foxcroft.mp@parliament.uk  
[www.vickyfoxcroft.org.uk](http://www.vickyfoxcroft.org.uk)  
**Janet Daby MP**  
 Lewisham East  
 ☎ 020 8461 4733  
 @ janet.daby.mp@parliament.uk  
[www.janetdaby.org](http://www.janetdaby.org)  
**Ellie Reeves MP**  
 Lewisham West and Penge  
 ☎ 020 7219 2668  
 @ ellie.reeves.mp@parliament.uk  
[www.elliereeves.com](http://www.elliereeves.com)

**Len Duvall AM**  
 London Assembly Member for  
 Greenwich and Lewisham  
 ☎ 020 7983 4350  
 @ len.duvall@london.gov.uk



# Private landlord in Lewisham?



Apply today for our  
new property licence.

From 1 July 2024, most  
privately rented properties  
in Lewisham will need a  
new licence.

**Apply now for a 20%  
early bird discount.\***

For more information go  
to [lewisham.gov.uk/  
selectivelicensing](https://lewisham.gov.uk/selectivelicensing)



\*Early bird discount is available  
until 20 August.

