



Lewisham Alternative Education Provision Directory

January 2024



Lewisham

Lewisham Alternative Education Provision Directory

	Page
Foreword	2
Abbey Manor College**	3
ADO Alternative Provision*	4
Arco Academy*	7
Education My Life Matters*	9
Flower Skills and Training	10
The Ilderton Motorvehicle Project	11
In Toto Ed	12
Lewisham College****	14
Millwall Community Trust	16
OMG	18
Our Future Tutoring	19
Rockbourne Park***	21
Roots 4 Learning	22
S V Academy*	24
The Complete Works*	26
The Tutorial Foundation*	28
The Write Time*	29
Urban Mission School*	30
Wize Up*	32
Young Lewisham Project	33
Young Women's Hub*	35
Your Beauty School	37

*Independent School subject to Ofsted inspection. Registration as an independent school is compulsory if a provider has more than five full time (18 hours a week or more) pupils or one full time pupil with an Education Health Care Plan (EHCP) or is a Child Looked After (CLA). A school is deemed as 'illegal' by Ofsted if it contravenes these guidelines.

** Pupil Referral Unit

*** Multi Academy Trust satellite

**** Further Education College

Foreword

The providers listed within this directory have undertaken an annual quality assurance visit with Lewisham local authority; have met the Ofsted standards for independent school status, registered Ofsted and in the application stage and have demonstrated the following standards:

Quality of education provided:	Lewisham local authority has an on-going responsibility towards learners placed Alternative Provision and has processes in place which assure the quality of provision delivered through external providers.
Spiritual, moral, social and cultural development of pupils:	There is evidence of a written policy on the curriculum, supported by appropriate plans and schemes of work which are drawn up and implemented effectively. The provider actively promotes the fundamental British values of democracy, the rule of law, individual liberty, and mutual respect and tolerance of those with different faiths and beliefs.
Welfare, health and safety of pupils:	The standards about the welfare, health and safety of pupils at the provision are suitable. The provider ensures compliance with health and safety laws are complied with a written health and safety policy. The provision promotes good behaviour amongst pupils.
Suitability of staff, supply staff, and proprietors:	There is evidence of staff DBS checks & a DBS Policy, monitoring of confidential personal and referral records.
Premises of and accommodation at the provision:	The standards of the premises of and accommodation at the provision are suitable. Suitable accommodation is provided in order to cater for the medical and therapy needs of pupils.
Provision of information:	The provider ensures information for parents of pupils and parents of prospective pupils; and for the local authority. The provider's website contains key essential information.
Manner in which complaints are handled:	The provider ensures that a complaints procedure is drawn up and effectively implemented which deals with the handling of complaints from parents of pupils.
Quality of Leadership and Management:	The provider demonstrate good skills and knowledge appropriate to their role so that the independent school standards are met consistently.
Safeguarding procedures:	The provider implements the correct procedures have been followed where safeguarding concerns have been raised about a member of staff.

Ruth Griffiths
Head of Access, Inclusion and Participation

Abbey Manor College

Type of provision - Pupil Referral Unit

Abbey Manor College provides educational programmes for 11-16 year olds who do not conform to conventional education. The college offers constructive learning based on vocational and GCSE programmes at KS4 (14-16) and National Curriculum subjects at KS3 (11-13).

Type of learner

KS3 and KS4 – permanent exclusions. KS3 and KS4 – learners at risk of permanent exclusion.

KS4 courses

GCSE English	OCR Level 1/Level 2 Cambridge National in Enterprise and Marketing
GCSE Maths	OCR Level 1/Level 2 Cambridge National in Health and Social Care
GCSE Citizenship	OCR Level 1/Level 2 Cambridge National in Sport Studies
BTEC Level 1/Level 2 Tech Award in Art and Design Practice	
BTEC Level 1/Level 2 Tech Award in Music Practice	

When, where and how is this provided

Broadoak Campus – Students in year 7 to 11 on a range of short and long-term placements. All learning takes place on site and is full time.

John Evelyn Campus – Students in year 10 and 11 on the RESET programme.

Referral routes

Referral via the home school for intervention placements or via the local authority for permanent exclusions.

Schools and local authorities that Abbey Manor College works with

Referral via the local authority for permanent exclusions. For intervention places, the home school will complete the referral form.

Charges

£100 per day (in borough)

£150 per day (out of borough)

Contact person and details

Nicola Keast, Deputy Headteacher, email: n.keast@abbeymanorcollege.com, telephone: 020 8297 7060, 40 Falmouth Close, London, SE12 8PJ.

ADO Alternative Provision

Type of provision

ADO operate a specialised AP service that brings together our expertise in both our Healthcare and Education services. We are able to provide a relaxed approach to education for our students and are a registered Training Centre.

At ADO we have a passion for outdoor education and what better location than our Healthcare and Education Centre! The centre, a 6.4 acre woodland and farmland just outside of South East London is home to our 50 species of animal and provides a perfect base to offer many subjects and qualifications relating to our specialisms including Animal Science, Equine Studies, Countryside & Environment, Adventure Sport and many more. We are also able to offer traditional pathways that can include Business Studies, Health and Social Care, and Functional Skills (Maths, English & ICT Entry-Level 2).

Type of learner

Our AP is a specialised education setting that aims to create flexible, individual programmes of learning support for Young People (14+) who, for a variety of reasons, maybe unable to access mainstream education. From the point of referral, we focus on the special educational needs and disabilities (SEND) of the learner and on family support, in order to provide the most effective and appropriate educational intervention.

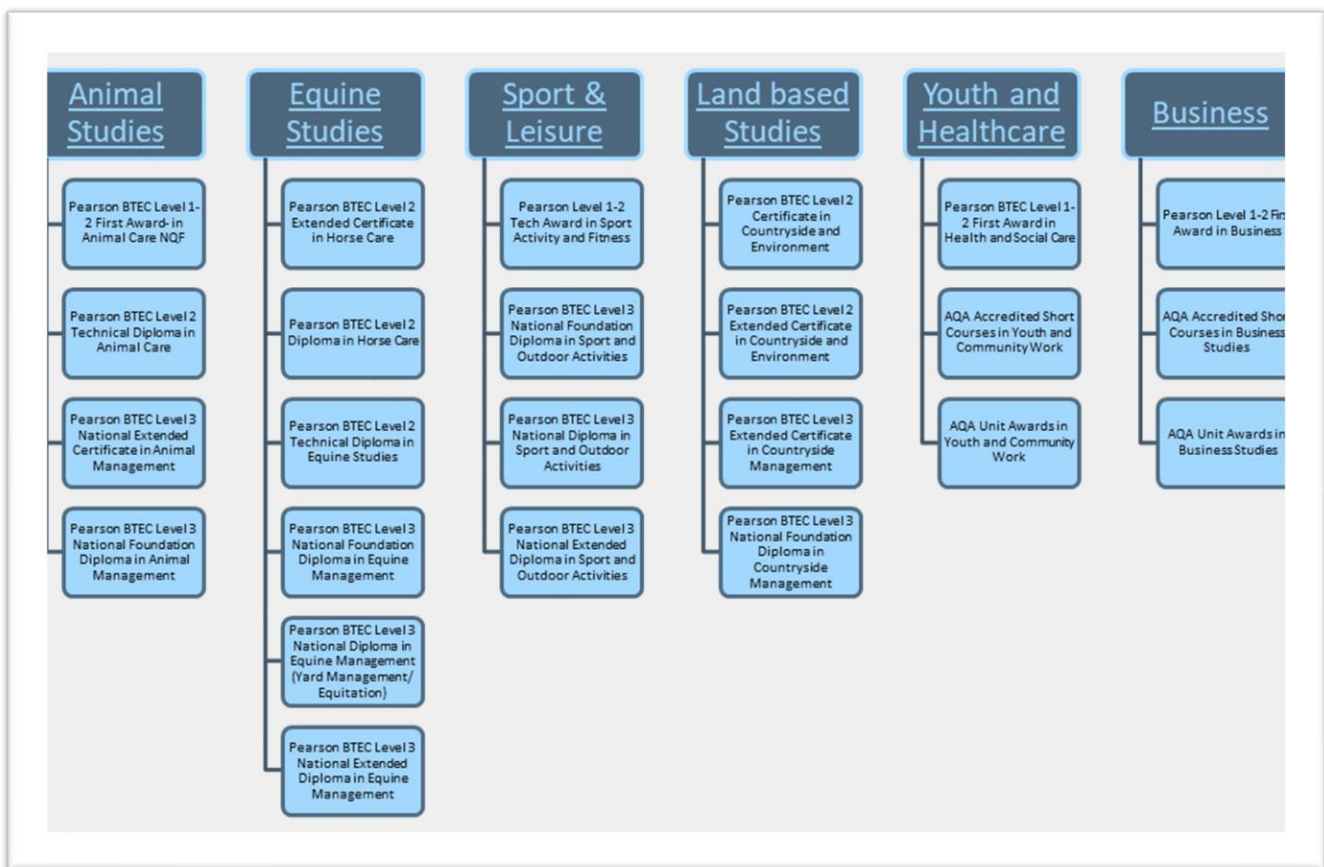
We do offer a 'Therapeutic Day Service' to young people who are below the age of 14, meaning that they can get the benefit from attending our setting however this does not follow educational set outcomes and follows our 'Assisted Activities' model.

Our AP specialises in education placements for young people with SEND including Learning Difficulties, Social Emotional Mental Health Difficulties and associated needs. Our team are multi-skilled and are used to delivering specialist educational programmes as part of a curriculum. Young people who attend with us must have a cognitive understanding of risk in our outdoor setting, and respect the therapeutic ethos that we follow.

We work in small 1:3 classes or 1:1 and aim to offer 'individual learning programmes' to meet their needs and interests enabling young people to learn whilst developing confidence and self-esteem. Our AP is catered to the full school education age range (14-19 with the view to potentially extending this to the age of 25 for caseloads who fit our criteria and withhold an EHCP).

Key Stage 4: These students are in a good position to be able to start with ADO as part of a 'fact finding experience', by being enrolled on to AQA Unit Awards that interest them. An appropriate level AQA Awards (Entry, Level 1 and Level 2) to these young people will aim to support their self-esteem and confidence which could then lead them on to Vocational BTEC Qualifications once we have ascertained the student's academic and emotional baselines. BTEC Courses are offered in various subjects including: Animal Studies, Environmental and Bushcraft subjects, Conservation, Adventure Sport, Creative Education and more. The courses listed in this paragraph are offered in specific areas of interest to the young person, in line with their 'Individual Learner Plans'.

Post-16: Excellent bespoke service that withhold strong career pathways which can be discussed with the student, family and referrer.



We have specialist staff including therapists to support the needs of students with a range of special educational needs and complex learning difficulties or disabilities including mental ill health. Our staff team with therapy qualifications and experience include specialisms in the following interventions:

- | | |
|-----------------------------|--|
| Counselling | Equine Assisted Learning |
| Animal Therapy | NLP/ life coaching |
| Cognitive Behaviour Therapy | Applied Suicide Intervention Skills Training (ASIST) |
| Relaxation Therapy | |

How can learners access it? - referral routes

ADO currently only takes professional referrals from individuals who are directly working to support the student, these include: School, Local Authority, Fair Access Panel, CAMHS, Social Worker, Virtual Schools (LAC), SEN Case Officer.

The professional carrying out the ADO AP Referral Form can access this via our website. Documents can also be attached including any EHCP, relevant therapeutic intervention reports or previous EP reports that will be relevant for review and planning of the child or young person's learning programme.

The information requested within the referral form covers the following areas: Data Collection Including Medical & Psychological Background/ Previous Or Current Therapy Interventions/ Subjects Of Interest Relevant To The Learning Programs Available/ Short & Long Term Life Goals/ Social & Family Background/ Details Of Educational History & Achievements/ Current Educational Difficulties/ Effective Management Strategies In Use.

When, where and how is this provided?

Monday-Friday 9am-3pm during term times. Referral Placements require a minimum of two days per week. For students with an EHCP in place we currently are able to provide 1-3 days per week education. Students without an EHCP can attend for 1-5 days per week (depending on individual profile). This intake information is subject to change as we transition into becoming a Registered Further Education Centre.

Schools and local authorities that ADO Alternative Provision works with

Boroughs of Lewisham, Greenwich, Bexley and Bromley, Kent County Council.

Charges

£50 for online assessment (form is sent to parent/carers or relevant adult following professional referral) and £250 1:1 x 2 days assessment. Total Assessment fees: £550

Education Placement Rates: 1:3 ratio Daily Rate - £190 per student, per day, 1:1 ratio Daily Rate - £250 per student, per day +VAT.

Therapy Placement Rates: Daily Rate- £235 (not vatable)

Contact

education@adoservices.co.uk

therapy@adotherapy.co.uk

www.adorivalley.co.uk

Tel: 020 8850 6778

Arco Academy

Type of provision

Arco Academy is an Independent Sports Specialist School which provides a warm and nurturing environment for students aged 11-16 years old.

We offer educational pathways in GCSE's and accredited vocational courses and understand that every student is unique, which is why we work closely with each individual to create a tailored programme that enhances personal development and academic potential.

Whether a student requires a long or short-term placement, we're here to support them every step of the way. We welcome students with EHCP's, and our outreach and wrap around care programmes, ensure that learners' needs are met, no matter where they are.

We help students reach their full potential and set them up for success beyond their time with us.

Courses on offer

GCSEs English language, English literature, religious education maths and Science – core subjects. Also History, Citizenship, PSHE – foundation subjects.

Functional Skills Entry level 1 – 3 maths (applied qualification), Level 1 - 2 maths, Entry level 1 - 3 English (applied qualification), Level 1 - 2 English and computing.

BTEC (courses are subject to availability) First Award in Sport (Level 1 and 2) - core subject, Health and Social Care, First Award in Travel and Applied Science.

Vocational courses (subject to availability)

Leadership course

Marketing course

Athletics Coaching Badge

FA Level Coaching Badge

Athletics Official Coaching Badges

Health and Safety

Nutrition

Communication Skills

Entrepreneurship course

Sports Leaders Awards

Basketball Coaching Badge

Coaching in Disability Sport

Basketball Official Badges

First Aid

Home Cooking Skills

How can learners access it? - referral routes

Pupils are referred by local authorities and schools.

When, where and how is this provided?

Monday – Friday (9:00am - 3pm), Term time only (follows Southwark academic year)

Charges

Different packages available. Please call to discuss.

Schools and local authorities that Arco Academy works with

Many schools in Lewisham, Southwark and Lambeth. Open to other boroughs.

Contact

Number: 02031891193

Email: referral@arco.academy

Website: www.arco.academy

Instagram: <https://instagram.com/arcoacademy?igshid=YmMyMTA2M2Y=>

Address: Camberwell Leisure Centre, Artichoke Place, Camberwell, London, SE5.

Education My Life Matters

Type of provision

Education My Life Matters (EMLM) is an independent school offering alternative provision. We believe all learners can succeed regardless of their starting points or background; by ensuring an appropriate mix of academic and life skills. Our ethos is 'Success for everyone' and we believe there is no limit to learning and we can persist in the face of setbacks.

We provide short- and long-term placements. We also offer a Fast Track service for first-day and sixth-day exclusions.

The learning is related to our learners' experiences, and we can adapt and amend learning based on the needs of our learners. We have thought carefully about our curriculum and use resources from Oak Academy, PSHE alliance, History.org. to name a few. We work to a two-week timetable, offering GCSE subjects, Functional Skills and other pathways include short courses from www.asdan.org.uk. We access Downham Leisure Centre and other facilities for PE, Boxing etc. We also work with our learners and tap into their skills, interests and arrange for days off site to gain work experience or possible courses they are keen to pursue.

Type of learner

KS3 and KS4 age range and all abilities. Learners who are at risk of or have been permanently suspended. Learners with EHCPs which includes SEMH and ASD.

How can learners access it? - referral routes

Referrals can come direct from schools, SEN providers, Virtual School and the Looked After Children Teams, Local authorities and private referrals.

When, where and how is this provided?

Monday to Friday 9:00am – 3:00pm term time. We provide both on site and off site support. The learning is related to our learners' experiences, and we can adapt and amend learning based on the needs of our learners.

Charges

Our rates are £120 to £280 per day. This is based on our banding document, dependant on the level of required support based on the learners' EHCP and/or complexity of needs presented. Online teaching is also available at £65 per hour.

Schools and local authorities that EMLM works with

Local authorities include: Lewisham, Greenwich, Bromley and Islington. We have also worked with many schools across the local authority including Prendergast Ladywell, Bonus Pastor and Abbey Manor College. We have/are working in partnership with Your Beauty, Millwall Community and Young Lewisham Project.

Contact

EMLM, 108 Conisborough Crescent, London SE6 2SP

Winsome Fletcher: Assistant Head Teacher w.fletcher@emlm.org.uk, 020 8698 9663

Julie Pierzchniak: Development & Welfare Lead j.pierzchniak@emlm.org.uk 020 8698 9663/
07876 545006

Flower Skills and Training

Type of provision

14-16 practical construction training working towards a City & Guilds 6219 Level 1 Award / Certificate / Extended Certificate / Diploma, depending on the individual's abilities and time available.

Courses on offer

Students who are interested in learning construction trades. Most of our students are in Years 10 – 12 but options are available for younger or older young people.

This training is heavily practically-based and is an ideal opportunity to re-engage into education learners who respond less well to a more academic environment.

How can learners access it? - referral routes

Referral by school, Local Authority or alternative provisions using a standard referral form.

When, where and how is this provided?

Students can be referred for placement throughout the academic year. The training takes place at the Flower Skills Training centre in Charlton with good public transport links nearby.

Available term-time Monday - Friday. Most placements are for between one and three days per week. Taster programmes are available.

Charges

Standard cost £95.50 per student per day. Discounts are available for groups. Short & taster programmes are costed based on student numbers and content / accreditation required.

Schools and local authorities that Flower Skills works with

Royal Borough of Greenwich, London Boroughs of Lewisham, Bexley, Southwark, Croydon, Bromley. Also, when requested Merton, Sutton, Tower Hamlets.

Woolwich Polytechnic, Plumstead Manor, The John Roan School, Cavendish School, The Tutorial Foundation, StreetVibes, Newhaven School, Kings Oak School, Park View Academy, Harris Academy- Greenwich, Harris Academy - Falconwood, Harris Academy – Garrard, Abbey Manor College, Welling School, St Columbus, Cleeve Park, Ian Mikardo School for higher Education, Coopers School, St Paul's School.

Contact

Jason Bodimeade

Telephone: 020 8305 50540

Mobile: 07437 011 626

Email: j.bodimeade@flowerskills.com

Ilderton

Type of provision

Motor vehicle training (cars and motorcycles) and personal development.

For what type of learner

13-19 year olds (up to 25 for SEN statement/EHCP), NEETS.

How can learners access it? – referral routes

Pupils are referred by local authorities and schools, as well as providers/agencies that work with the target group.

When, where and how is this provided?

Roll-on, roll-off during term time.

Charges

Our daily fees are £150+VAT per day.

Schools and local authorities Ilderton works with

Local authorities: Lewisham, Southwark, Greenwich and Bromley, schools, other Educational Providers: Abbey Manor College, South Inclusion Learning Services, New Haven, Lansdowne School, Lewisham Work Experience Team, Complete Works, Shaftesbury, Next Steps Fostering Services.

Contact

Iristide Essien iris@ilderton.org 07956 290 169
Toni-Lee Ferguson, toni@ilderton.org 07873 486 953
80A Edward Street
Deptford, SE8 5HB
Tel: 0208 691 7643

In Toto Ed

Type of provision

Alternative Provision. We currently preparing to apply for Ofsted registration as an Independent Special School for ages 11-18. We hold accreditation to deliver qualifications through AQA, NCFE, City & Guilds, UAL, Arts Award and AIM Qualifications.

For what type of learner

Ages 11-18. Our core intake comprises of students who are not accessing mainstream education because they are:

- Experiencing mental health issues.
- Refusing to attend school entirely or for much of the time.
- Experienced bullying or other trauma in or out of school.
- Dealing with difficult/complex life circumstances.
- Excluded from mainstream school.
- Students with physical health conditions such as ADHD, ADD, SEMH, BESD.
- Having Autism/Asperger's.
- Experiencing difficult life circumstances/poor behaviour in school.
- Negative changes in student's attitude to learning, motivation, confidence, and self-esteem.
- Learning disability.
- Students with EHCPs.
- Emotional and behavioural difficulties.
- Poor educational attainment.
- Unable to access mainstream education.
- Bereavement within the family.
- At risk of exclusion or suspension from educational services.
- Struggling to cope with difficult life challenges.
- In a sheltered environment due to domestic violence, homelessness or other.

How can learners access it? – referral routes

Access to the programme is through an initial referral form, which can be downloaded from our website <https://www.in-toto-ed.com/refer-a-student>. An appointment is then made to complete the IAG and enrolment process.

If the student is not in school, they must complete assessments in Maths and English. A letter stating the levels they are working towards will suffice if they are in school.

We require relevant SEND and safeguarding information to ensure the students receive the best provision, and their needs are fully met.

Enrolment can take place at any point in the year, and we offer provision either in term time or all year round. Lessons are in termly blocks to allow the student to settle in and develop a rapport with staff.

We aim to begin delivery within one week of referral.

When, where and how is this provided?

The centre is open five days a week in term time. Lessons take place between 9.00am-4.30pm in our centre, based in central Blackheath. All our programmes are overseen by a subject specialist with QTS. We have a SENCO and a team of support workers.

Courses currently on offer

GCSEs

- English
- Maths
- Science
- Computer Science
- Music

Functional skills

- English – E1-Level 2
- Maths – E1-Level 2
- ICT - Level 1 & 2

Unaccredited courses

- Life Skills
- PSHE

Accredited courses

- Art and Design - Level 1, 2 & 3
- Arts Award - Bronze (Level 1), Silver (Level 2) & Gold (Level 3)
- Beauty – Entry Level-Level 2
- Business Administration - Level 2 & 3
- Cookery – Level 2
- Creative Media – Levels 1-3
- Employability - Level 1 & 2
- ESOL
- LAMDA - Grades 1-8
- Music - Level 1, 2 & 3
- Music Production - Level 1, 2 & 3
- Sports Coaching – Level 2
- Personal Training - Level 2 & 3
- Foundation Project - Level 1
- Higher Project - Level 2
- Extended Project Qualification (EPQ) - Level 3

We offer a bespoke pathway for each of our students to maximise participation and engagement. As part of our bespoke offering, we are willing to expand our programme to suit the individual needs of each student. If you require a course not listed above, please contact us for further discussion.

Charges

One to one cost = £60 per hour

Small group cost = £50 per hour

One to one plus dedicated support worker = £82.50 per hour

Schools and local authorities In Toto Ed works with

Cambridgeshire and Peterborough Local Authorities – we have been successfully running centres in Cambridge and Peterborough for the last 2 years.

Lewisham, Greenwich and Islington Local Authorities.

John Roan School, St Mary Magdalene School, Kingsdale, Conisborough College and Deptford Green.

Contact person and details

Nadine Currie Nadine.Currie@in-toto-ed.com

Tel. 0203 691 4053

www.in-toto-ed.com

Lewisham College

Type of provision

Lewisham College is a Further Education College focusing on vocational and technical learning pathways. The College offers courses for 16-18s and adults as well as a range of provision for KS4 learners referred from local schools and Lewisham school admissions.

Part time vocational courses (work related learning)

The College can offer group sized programmes for Year 10 and Year 11 learners on vocational courses. These day release courses are studied at our Lewisham Way campus and take place over one year.

Type of learner: Learners with an interest in a vocational pathway who are keen to learn new skills in a practical, work-related setting. The minimum group size for this programme is 14 at KS4.

Entry Links Programme

The Entry Links Programme is designed for Year 11 learners from local special schools who are preparing for their post-16 transition. The programme offers an extended induction to the College and its facilities, as well as a range of vocational taster courses in practical areas and focuses on personal and social development, helping learners build confidence and independence in a supportive and nurturing environment.

Type of learner: Learners who require a supported entry to the College, often learners with recognised additional learning needs.

Year 11 ESOL

The Year 11 English for Speakers of Other Languages (ESOL) programme offers full-time courses for young people with a focus on learning or improving their English language skills. The learners are assessed at entry and join classes with 16–19-year-olds at the appropriate language level. The learners are usually new to the UK with no secondary school place and with English as an additional language.

Type of learner: Young people in Year 11 with English as an Additional Language who are often new to the Borough / the UK and have no secondary school or whose language needs cannot be met in school.

How can learners access KS4 provision? - Referral routes

Referral for all courses at KS4 is via the home school or local authority.

- KS4 part-time applicants are interviewed with their parents/carers following referral. Vocational programmes applicants attend taster events following a referral. They will then be asked to complete an application form. Taster events are referred to Lucy Romero-Martinez.
- Entry links are referred via the admissions team to Pamela Frost.
- Year 11 ESOL are referred via the admissions team at Lawrence House to Fadumo Mohammad.

When where and how is this provided

WRL/ Vocational Links: 9.00am-3.00pm - Mondays Year 10 and Fridays Year 11.

Entry Links: usually 1 day per week as arranged by individual schools.

Year 11 ESOL and full time KS4 - up to 25 hours per week or as requested by schools.

The schools provision takes place at the Lewisham Way and Deptford campuses.

Provision costs

The College is happy to discuss and develop bespoke provision with schools. It also offers free one day tasters to learners in year 10 and 11.

Contact and person details

Further information on school programmes can be found at www.lewisham.ac.uk/educational-partnerships. Alternatively, you can find out more information from the contacts below:

School Liaison and Transition Programmes

Lucy Romero-Martinez: Lucy.romero-martinez@lscollege.ac.uk, 020 3757 3104

Entry Links

Pamela Frost: pamela.frost@lewisham.ac.uk, 020 3757 3510

ESOL Young

Fadumo Mohammed: fadumo.mohammad@lewisham.ac.uk, 020 3757 4106

Millwall Community Trust AP Sport Engagement Programme

Type of provision - Millwall Community Trust 14-16 Alternative Provision (AP) Academy

Millwall Community Trust delivers a varied education programmes to young people aged 14-19. Millwall 14-16 AP Academy is a part-time alternative education provision and acts as a precursor to our post-16 football academy and Sport Traineeship programmes providing KS4 students (incl YR9 opportunities to study towards a recognised L1-2 Sport qualifications, Employability and industry specific qualifications, whilst partaking in practical, sport-related activities and learning.

Our curriculum offers both non-formal theory and practical activities. We aim to help re-engage targeted students in learning and develop the skills, knowledge and understanding necessary for employment in the sports industry sector. MCT also offers provision designed to help students to continue to develop their English, Maths and ICT skills.

MCT has experienced coaches, tutors and mentors who provide students with real life experiences of working within the sports sector, and providing clear and direct post-16 routes into MCT FE programmes, traineeships, coaching and employment.

Programme offer

Our 14-16 AP Academy programme delivers a distinct year 10 and year 11 learning and accreditation programmes alongside with Maths and English support where required and providing the following accredited qualification accessible for students to achieve across each year group:

- Sports Award L2 or Health & Fitness Award L2 (For students on 2 year programme)
- YMCA L1 Fitness & Physical Activity Award (Precursor to Gym instructor professional L2 qual)
- Employability L1 and L2 Award or Certificate
- Money Management L1 and L2 Award
- First Aid L2

Core curriculum

Taking part in sport, assisting sports event, planning and improving own fitness, risks and hazards in sport, how the body works, assisting a leader / coach and working in sport. Career / post-16 opportunities, employability skills, independent living skills, first aid and safeguarding and peer mentoring.

Sixth day provision and intervention support

KS3/KS4 Sixth day provision can be offered for students on fixed term school exclusion. MCT can offer 1:1 student support within school settings. If school phobic or restricted to home, 1:1 tuition or coaching support at a neutral agreed venue can be provided. Schools may also use MCT facilities as an offsite support centre. Bespoke KS3 programmes can be created if required

Type of learner

Young people aged 14 – 16 meeting at least one of the below criteria:

- Currently disengaged from traditional schooling

- An interest in Sport or Elite Footballing potential and desire to work in football or sports industry
- At risk of or currently excluded from mainstream education looking to secure post-16 pathway.

How can learners access the provision? - Referral routes

Pupils are referred by local authorities, schools, Social Care and YOS.

When where and how is this provided

Millwall 14-16 AP Academy: 1-2 days per week (Mon to Fri). Bespoke Group package on request . The programme runs 8.45 to 2.45pm (lunch and full Millwall uniform included). Placements can be either for a term or full year period. Based predominately within the Den (the Millwall Football stadium), the MCT Lions Centre and also from offsite satellite provision. All of which provide a unique learning and sporting environment with relevant work experience in the industry.

Students are expected to travel independently to the Den, though MCT is happy to work with referring schools that prefer to transport their students to the provision. Learners are expected to wear appropriate clothing when attending. Full uniform / kit expectation will be outlined on joining.

Schools and local authorities that Millwall Community Trust works with

Southwark: Harris Bermondsey, Harris East Dulwich for Girls, Compass School Southwark, SILS, Bacons College, Cavendish School, Treasure House, Phoenix Place.

Lewisham: Sydenham Girls, Conisborough College, Deptford Green, Abbey Manor College.

Charges

Millwall 14-16 AP Academy referral: Charged at £80.00 per day.

Contact and person details

John Scarborough, MCT Education and Employability Manager Millwall Community Trust, Lions Centre, Bolina Road, London, SE16 3LN, Email: jscarborough@millwallcommunity.org.uk

OMG Training and Development CIC (OMG Education)

Type of provision

Alternative Provision.

Type of learner

OMG Education caters to a diverse range of learners who may not thrive in traditional mainstream educational settings. These include students with behavioural challenges, special educational needs, those who have faced exclusion from regular schools, learners with medical conditions, and students at risk of exclusion.

Our programme offer:

- Functional Skills Maths up to Level 2
- Functional Skills English up to Level 2
- Employability Skills up to Level 1
- Music or Creative Arts up to Level 1
- 1-2-1 Mentoring through the Programme
- Take part in a range of Personal Social and Development Workshops including:
- Confidence Building, Team Work, Gang Awareness and Conflict Resolution.

How can learners access the provision? - referral routes

School referral, Local Authority (LA) referral, medical referral.

When, where and how is this provided?

This service is available all year round – **Full time Provision:** Monday to Friday from 10.00am-4.00pm, **14 Week Programme:** Monday to Friday from 10.00am-4.00pm for 14 weeks including half term, **Part Time Provision:** Maximum 16 hours a week 1-3 days a week. We create bespoke programmes for individual learners and needs.

Schools and local authorities that OMG works with

Waltham Forest, Lewisham, Tower Hamlets, Islington, Hackney and Sutton.

Charges

Full time provision: £13,500

14-week programme: £4,500

Part time provision: £125 per day

Contact and person details

Jamal Miah, Director

jamal.miah@omgeducation.co.uk

Our Future Tutoring

Type of provision

Tuition and mentoring programme and education support.

This is a service that provides children and young people with personalised and tailored support in various subjects and areas, such as maths, English, science, and more.

Our programme consists of two main components:

- **Tuition:** This is where children and young people receive one-to-one or small group sessions with a qualified and experienced tutor who will help you with your specific learning needs and goals.
- **Mentoring:** A mentor who will support children and young people with their personal development and well-being. The mentor will be someone who has similar interests or experiences, and who can offer advice, encouragement, and inspiration. Mentor will meet regularly with the young person, either online or in person, and discuss topics such as hobbies, career aspirations, challenges, and achievements.

Our programme aims to provide you the following benefits:

- Improved academic performance and grades.
- Increased motivation and self-esteem
- Enhanced creativity and critical thinking skills
- Expanded horizons and opportunities.
- Greater sense of belonging and community

Our future tutoring is recognised as a centre to offer accredited/ functional skills courses and qualifications through Open Awards.

Type of learner

We support all young people from 5 to 16+ years old.

How can learners access the provision? - referral routes

If you are interested in our service, please contact us by phone or email to arrange an initial assessment. We will discuss the needs, goals, and preferences, to ensure we match a suitable tutor or mentor. We will also provide regular feedback on your progress.

Please request a referral form from info@ourfuturetutoring.com

Tel: 0203-3915-5875

When, where and how is this provided?

This service is designed to provide individualised and tailored support in various subjects and skills, such as maths, English, science, IT, and more.

We offer support in small groups and one-to-one sessions at the OFT office, libraries, home or any suitable learning environment. Our tutors and mentors are qualified, experienced, and friendly professionals who will help children and young people achieve their full potential.

Our service is available on the following days and times:

- **Education Support and Tuition:** Monday to Friday, 9am to 5pm (after 5pm available depending on circumstances – on request)

- Mentoring: Monday to Saturday, 9am to 5pm (after 5pm available depending on circumstances – on request)

We operate during term time, unless requested otherwise. The maximum number of hours per week that we can provide is 16.

Schools and local authorities that Our Future Tutoring works with

Currently working with Royal Greenwich borough, Lewisham, Surrey County Council.

Charges

£55 per hour.

Contact and details

Angeline Clarke

aclarke@ourfuturetutoring.com

Tel: 0203-915-5874

Rockbourne Park (RP@GG)

Type of provision

Primary Phase Alternative Provision.

We are part of Evolve Academy located in Lambeth and are part of the Parallel Learning Trust.

Type of learner

Primary aged pupils who are out of education/at risk of exclusion.

How can learners access the provision? - referral routes

Referral forms are available from Lewisham Fair Access Panel
Lavinia Phillips
Email: FAP.lewisham@lewisham.gov.uk
Telephone: 020 8314 7447

When, where and how is this provided?

We are based at Grinling Gibbons Primary School.

We work during term time and operate from 8.30am to 4pm, five days a week.

Children are on site 6.5 x hours a day (32.5 x hours per week).

Schools and local authorities that Rockbourne Park work with

Lewisham Fair Access Panel and all Lewisham Primary schools.

Charges

Placements available only through Lewisham Fair Access Panel.

Contact

Melissa Williams, Headteacher, 020 7504 0542 / 07884 181 415 Mwilliams@plt.org.uk
Stephen Orton, Assistant Headteacher, 07854265287 sorton@evolveacademy.org.uk
C/O Grinling Gibbons Primary School
Clyde Street, SE8 5LW

Roots 4 Learning

Type of provision

Roots is a part time alternative provision supporting the work of schools. We offer programmes of support for learners in KS2 (year 6 only), with a specialism in KS3, KS4 and KS5. We are attachment aware, trauma informed and we offer a holistic and relational approach to education. Our programmes of support are bespoke to our learners need's and interest's.

We support young people that have barriers to attendance, social emotional and mental health challenges and learners' that may have diagnosed or undiagnosed special educational needs. Our learner's may be neurodiverse, exhausted by masking every day, and struggling to meet the demands of a full week in a large busy mainstream environment.

Wellbeing and promoting good mental health is integral to our work at Roots. Our staff are highly trained and guided by neuroscience. We aim to create a shared understanding between us, our learners and their families. We passionately believe that creating the right environment, having the right staff and the right approach is fundamental to enable learning to take place.

At Roots we have a wider team of professionals that support our work including educational psychologists, speech and language support, counselling, and psychotherapy. We have two therapy dogs often at the centre which can help with regulation and encouraging exercise.

Our curriculum

Maths (GCSE/Functional Skills)	Geography (GCSE)	Arts Award (Lev 1, 2, 3)
English (GCSE/Functional Skills)	History	PE (GCSE)
Science (GCSE Biology)	PSHE	Beginners Coding
Careers	Digital DJing	Boxing (ABA Coaches)
Digital Skills (Functional Skills)	Food Technology	Animal Care

Type of learner

They may also be young people that have found it hard to re-engage back into school since COVID. We can offer support to help reintegrate back into school, or support with appropriate transitions. They may have had adverse childhood experiences, experienced trauma or in some cases have school-based trauma. We aim to quickly develop connections with our students and their families to support them in their recovery.

We can also offer programmes for children that are home educated or in education other than school.

How can learners access the provision? - referral routes

Local authority, referrals direct from schools and private referrals

When, where and how is this provided?

Full day: 9:30 – 2:30pm Monday – Friday

Half day: 9:30 – 12 or 12-2:30pm

Term-time only (**Maximum 15 hours per week**)

Local authorities that Roots 4 Learning work with

We are open to all schools and local authorities.

Charges

Please make contact to discuss our pricing.

Contact

Co-Headteachers: Liz Key and Emma Foinette

Email: lizkey@roots4learning.co.uk

emmafoinette@roots4learning.co.uk

Address: 41 Valeswood Road, Bromley, BR1 4RD

Telephone: 0208 461 2597

S V Academy

Ofsted 'Good' Music & Media AP Nurture School

Type of provision

OFSTED inspected Alternative Education Independent School. **Consistently rated 'Good' across all areas, at every inspection since inception.**

Life-changing opportunities

StreetVibes Media Academy (SV) is an AP nurture school with a focus on fostering supportive pastoral care alongside an inspiring, creative curriculum. With a track record in securing grant funding to deliver enrichment opportunities to our school community, we have offered our pupils after-school creative music and digital media workshops, positive activities programmes in the school holidays and school trips, including Stubbers Activity Centre and a fully funded overseas trip to Barbados. These opportunities are open to all pupils referred to our school, and support our mission to raise aspirations, develop key skills and support sustained positive change in young people.

Re-integr8: Sixth day exclusion provision

StreetVibes Media Academy (SV) offers short, sixth-day suspension reintegration programmes for pupils on fixed term suspensions from schools and those requiring respite places. Students follow the national curriculum for their age together with programme of engagement, pastoral care, behavioural management and mentoring interventions with the aim of sustainable reintegration with school or successful transition to post-16 courses. Our Re-integr8 programme is supplemented by additional mentoring and tracking once the pupil has returned to school, to support each pupil to sustain and succeed in education, long term.

Full time, part time & SEN provision

SV delivers full and part time education for pupils who are unable to access mainstream schools. This can include looked after children, new arrivals to the UK, young offenders and pupils who are undergoing assessment for an EHCP. Our DfE-approved, creative and vocation-led curriculum, designed in partnership with Goldsmith University's Inclusive Education department, delivers GCSEs, BTECs and Arts Award qualifications as well as Functional Skills and Essential Digital Skills Qualifications and is supplemented by Matrix-accredited Information, Advice and Guidance to support learners into positive post-16 destinations.

At Key Stage 3, our curriculum includes practical and vocational skills such as cookery and gardening alongside small nurture groups in English, maths and science.

At Key Stage 4, pupils access 5-8 GCSEs alongside BTECs and Functional Skills supplemented by a technology-rich curriculum and a citizenship programme that prepares pupils for the world of work and apprenticeships and embeds skills for further study at post-16.

At post-16, SV offers government-funded Post 16 Study Programme in BTEC Digital Music and Media, supplemented by GCSE maths and English. This can provide a seamless transition route for Year 11 pupils who have joined GCSEs late in the year, or who require a smaller setting for post-16.

Type of learner

SV has an 18-year track record of supporting and educating young people. Our programmes resonate with any pupil that requires additional support to achieve in a mainstream school setting. Our offer includes small classes (1:4 staff:student ratio); high levels of pastoral care; school nurse; school counsellor; learning mentor; vocational curriculum; after school clubs in boxing, music and art; breakfast club (free breakfast).

Our specialism is Music and Creative Media and our school is fully equipped with drums, piano, bass and electric guitars, recording studios, filmmaking equipment and animation lab.

Referral process

Pupils are referred by schools and statutory agencies (YOS, Children's services etc) and we can usually turn around referrals in less than 24 hours. Admission is by interview with placements commencing immediately afterwards.

Location

SV Academy is based at 6 Eltham High Street, SE9 1DA.
We offer entry points throughout the school year.

Charges

All costs include all materials, teaching, qualifications and lunch. Breakfast, after-school activities, small group/1:1 reading and maths and after-school English, maths and science tuition is offered at no charge to all pupils.

Full-time: £102.50 excl VAT per day

Part-time: £98 excl VAT per day (1 to 3 days per week)

Pupils with an EHCP: £108 excl VAT per day (following review of needs).

Contact

Sonia Ramanah, Director and DSL, StreetVibes Media Academy

Telephone: 0203 031 8240

Mobile: 07887 640 335

Email: sonia@sv-academy.com

Website: www.sv-academy.com

The Complete Works

Type of provision

We are a registered alternative education school and charity built on an ethos of bespoke and creative learning. We work with young people who are unable to attend mainstream school for a variety of reasons, including mental health, complex educational needs, previous school exclusions, or medical conditions. Through a combination of group and 1:1 education, extracurricular creative projects, and holistic wellbeing support, we provide our students with a nurturing and supportive educational experience that helps them to rediscover their love of learning and thrive in our school community. Since being founded in 1999, we have positively changed the lives of countless young people.

We design a bespoke education package for every student that is as unique as they are. Drawing from a broad range of vocational and academic qualifications, our students discover new skills and passions that open the door to many exciting career opportunities. Lessons are taught in our Learning Hubs, which are equipped with a range of state-of-the-art facilities (including a construction workshop, training kitchen, music studio, science lab, drama studio, art studio, and therapy room). The Hubs give students the chance to work alongside other young people and take part in a variety of courses, including BTECs, Vocational Courses, and GCSE and KS3 immersive learning days. Class sizes are kept small (usually below 6 students) to allow the teacher to give everyone the attention they need. We also work on a 1:1 basis in the community or in students' homes. All lessons, no matter what level or subject, are designed to be creative, dynamic, and personalised to the learners present. Typically students are offered a combination of group and 1:1 learning, as well as weekly personal development sessions and the option of counselling; however, this is adjusted based on each student's individual needs.

Student enrolment can take place at any point in the year and for short or long periods of time. All courses are age-appropriate, and we can accommodate students in Key Stages 1–5. Students are able to study with us for up to 25 hours a week.

Our curriculum is built upon a foundation of the Core Subjects - Maths, English, Science, and PSHE - with a wide range of additional GCSE and BTEC qualifications, including, Art, Cooking, Music, Animal Care and Land-Based Studies, Business Enterprise, Construction, Cooking, Creative Media, Digital IT, Hair and Beauty, and Music. Some students may be better suited to study for Functional Skills and Entry Level Examinations, which we are highly experienced at delivering. We also offer Arts Award.

Type of learner

Young people join us when they need a new approach to their education after mainstream school has proven unsuitable or impractical. Many of our students have missed out on large parts of their education for various reasons including ill health or personal circumstances. Some of our students may have special educational needs, disabilities, or be on the autism spectrum. We also work with young people who have been excluded from other schools.

How can learners access KS4 provision - referral routes

We accept referrals through schools or local authorities.

When, where and how is this provided?

We offer vocational courses and immersive GCSE Days taught at our Learning Hubs alongside three-hour 1:1 lessons in students' homes or in the community, plus personal development sessions and counselling. Personal development and counselling sessions can be bought into individually or as part of a full-time Single Roll package.

Our learning Hubs are at the following locations:

- Creative Hub South – The Gateway Centre, 66 Lancaster Street, SE1 0RZ
- Creative Hub North - Universal House, 88-94 Wentworth Street, E1 7SA
- Bermondsey Hub - Salmon Youth Centre, Old Jamaica, SE16 4TE
- Shoreditch Hub – 38 Commercial Street, E1 6LP
- Attlee Hub - 5 Thrawl Street, E1 6RT

Local authorities that The Complete Works works with

Southwark, Hackney, Islington, Lewisham, Tower Hamlets, Lambeth, Westminster, Camden, Haringey, Merton, and Ealing.

Charges

Single Roll Referrals

Charged Half-Termly

Full-time (25 hours per week): £8,735

Post-16 (19 hours per week): £6,970

Dual Roll Referrals

Offsite Session (per three-hour session): £166.00

Onsite Day (including lunch): £336.00

Speak to us for a personalised quote, including optional add-ons.

Contact

Referrals Team

Email: Referrals@tcw.org.uk

Adam Dalton - Headteacher

Email: headteacher@tcw.org.uk

Telephone: 020 7377 0280

The Tutorial Foundation

Type of provision

Our Day School provides a nurturing, caring, family environment for students in Key Stages three and four. We have very small classes and offer individualised academic pathways to help our students achieve their full potential. As many of our young people have EHCPs and are often school avoiders, our SENCo and Student Manager ensure they receive the support they need to achieve their outcomes and improve attendance. Students who need literacy support, follow a programme to boost these critical skills.

Alongside their academic lessons, our students also participate in more therapeutic and extra-curricular activities such as cooking, art, PE and craft to build their self-esteem, self-confidence and independent living skills. All of our young people have access to a school counsellor, student mentor and where necessary, a learning mentor. The majority of our Year 11 students move onto college, vocational training or remain in school to gain further qualifications whilst our short-term respite students, are successfully transitioned back into mainstream at the end of their temporary placement.

Type of learner

All types.

How can learners access the provision - referral routes

Local authority, local schools and private referrals.

When, where and how is this provided

Usually 8:30am - 2pm, Monday, Thursday & Friday, and until 2:30pm on Tuesday & Wednesday, term-time only.

Schools, local authorities that The Tutorial Foundation works with

Lewisham, Bromley, Greenwich, Croydon, Bexley, Greenwich, Ealing, Southwark, Islington and Kent local authorities.

Addey & Stanhope, Bullers Wood, Charles Darwin, Chislehurst School, Cleeve Park, Conisborough College, Coopers School, Deptford Green, Eltham Hill, Forest Hill Boys, Harris Academies, Hayes, Knights Academy, Langley Boys, New Woodlands, Prendergast, Ravens Wood, Ravensbourne, Sedgell, St Augustine's, Stationers Crown Wood, Step Academy Trust

Charges 2023/24

Onsite group £31.50 + vat per hour
Onsite individual £46.50 + vat per hour

Offsite A distance £52 + vat per hour
Offsite B distance £65.50 + vat per hour

Contact

Julia Low, Headteacher,
Telephone: 020 8460 0181 option 3
Email: sen@thetutorialfoundation.co.uk
Website: <https://thetutorialfoundation.co.uk>

The Write Time

Type of provision

Ofsted approved Independent Special School.

Type of learner

KS3 – KS4 age range and of all abilities.

How can learners access the provision? - referral routes

Via Secondary Fair Access Panel, Local authorities, or direct referrals from schools

When, where and how is this provided

Monday-Friday (9:30am - 2.45pm) – breakfast club at 8.30am
The Write Time, Warrington road, Croydon, CR0 4BH

It is provided in the form of six lessons a day, with fully qualified staff, offering GCSE subjects, Functional Skills, PSHE, Skills for Life, First-Step Accredited Courses, and Personal and Social Development

Schools and local authorities that The Write Time works with

Croydon, Lambeth, Merton, Lewisham, Wandsworth, Southwark, Sutton, Bromley, Bexley, Brighton

The Limes College, The Archbishop Lanfranc Academy, St Mary's Catholic High School – Croydon, Deptford Green School, Sedgehill School etc

Charges

Core Fees: £35,995 per year

Online Provision: £33,262 per year

1:1 Support (including school fees): £70,285 per year

Contact

Kevan Wayne-Morris – Headteacher

Tel: [020 8689 7676](tel:02086897676)

Email: kevanwayne-morris@thewritetime.org.uk

Urban Mission School (UMS)

Type of provision

Independent School

School offer

The school is registered for 18 students in-person and delivers a nurturing and small classroom-based provision for KS3 and KS4 students. We offer full time education for students aged 11-16 for short and long term placements.

Our students

This is not just those with SEND, but the children who, despite numerous interventions, may not be progressing as they would have hoped to.

We specialise in working with children who have had Adverse Childhood Experiences (ACES). Our team collectively possess the necessary skills to support young people who have Social, Emotional and Mental Health (SEMH) challenges. Using a range of therapeutic interventions and principles we endeavour to support our students in developing emotional resilience, a feeling of safety and well-being. This enables students to be better positioned in accessing a skills-based curriculum.

Family support

Our family-centred approach recognises that the family is the central most important element in young people's lives. In order to effectively make an impact on a young person's development, education and outcomes it is essential that there is a positive relationship between school and home.

Therapeutic interventions

All staff are trained in Youth Mental Health. We take a holistic approach to young people and their education, this happens by developing the skills, competencies and confidence in young people which support the building of positive relationships with staff, peers and their learning.

The following strands of support and intervention are available to students as appropriate: Counselling, Art Therapy, Mentoring and Lego Therapy

Attainment and progress

We offer academic and vocational pathways, students are able to obtain attainment in:

- Functional Skills in Maths and English at Entry Level 1, 2 & 3.
- Arts Award with Music, Media or Dance pathways available.
- GCSE's in English Language, Mathematics, Biology, Citizenship and Religious Studies.

How to access our provision

Schools, Local Authorities and their Fair Access Panel.

When, where and how is this provided?

School day Monday - Friday 8:30 a.m. - 2:30 p.m. (except Wednesday 8:30 a.m. - 1:00 p.m.)

Breakfast from 8:30 a.m. to 8:45 a.m. is included in daily charge, and hot meals are provided at an additional cost of £2.90 per day.

Charges

£144.28 per day, for academic year 23/24. Please contact us, as this changes each academic year.

SEND/EHCP/LAC: 30% uplift in the daily charge, plus any additional staffing/tutoring costs.

Contact and person details

Executive Head: Ms Linda Ughere

Site Location: 1 Cornmill Lane, Elmira Street, Lewisham, LONDON, SE13 7FY

Tel. No.: 0208 318 6133 / 07927585168

Email: linda.ughere@umsc.uk

Website: www.umschool.uk

Wize Up

Type of provision

Alternative provider for young people with emotional and behavioural support needs. Wize Up provides long and short term placements.

Other provision

Access to an on-site counsellor. Self-esteem group sessions on a termly basis.

Programme offer

GCSE: English Language and Literature, Maths, Citizenship, Biology and RE.

Functional Skills: English, Maths and ICT. Entry Level qualifications also available. Princes Trust

Type of learner

Young people considered to have some SEN needs – emotional and behavioural. Learners with different types of learning styles such as these are incorporated into Wize Up's lesson delivery.

How can learners access KS4 provision? - Referral routes

Access is via schools sending referrals to Wize Up with details of the learner and any support needs. The learners are then invited to attend an induction with their parents/carers provided this provision is suitable for them.

When where and how is this provided

Monday – Friday: 9:00am to 3:00pm (4:00pm for year 11 beginning of term two). Hot lunch is provided, inclusive of daily charge. Five sessions take place daily with young people taught in three separate groups (Group one all KS3, Group two year 10, Group three year 11).

Girls only provision (Ruby) providing spaces for 30 students in a therapeutic environment 9:15am – 3pm as above with four sessions daily coupled with therapy focused sessions.

Schools and local authorities that Wize Up works with

All Greenwich schools. Greenwich, Lewisham and Bromley LAs. Local and Bexley schools.

Charges

£95 (main site) £100 (Ruby site) per day although should placements be booked in advance via a Service Level Agreement a discount may be applied depending on the number of places booked.

Contact and person details

Karlene Thomas, 579 Westthorne Avenue, London, SE9 6DN,
Tel: 0208 859 9664 Karlene.thomas@wize-up.org.uk admin@wize-up.org.uk

Young Lewisham Project

Type of provision

Young Lewisham Project is a specialist alternative education provision delivering vocational courses to young people from Lewisham and surrounding boroughs. Our activities include working in small groups of 1 - 4 to deliver Motorbike and bicycle mechanics, gardening and horticulture, music production and digital media, carpentry and joinery skills, cooking, arts and crafts and fitness sessions/boxing. We can offer one to one functional skills tuition where required. All our courses are OCN accredited. We also deliver Duke of Edinburgh and Jack Petchey Awards.

We focus on practical activities and regularly run a variety of off-site trips including motorbike and mountain bike activities in safe, legal and positive environments to build positive teamwork and communication skills as well as learn safe riding skills and discourage future anti-social riding.

We provide a safe, inclusive learning environment where young people can maximize their potential, improve their knowledge and skills and get a positive experience of education where they feel confident and ready to learn.

We aim to re-engage young people into longer term education, training and employment increase their general well-being and improve their skills, knowledge and self-esteem.

We also have the Lighthouse Project which is part of Lewisham Virtual School and supports Children Looked After through short-term exclusions or those at risk of exclusion. Work is delivered either at YLP or within the young person's school.

We fall under Lewisham's wider safeguarding procedures and pride ourselves on this area of work, liaising closely with these agencies to keep our young people safe.

Type of learner

We work with 11-19 years olds (SEN up to 25). Young people who are at risk of (re)offending or anti-social behaviour and/or are vulnerable. NEET young people, we are highly effective in rerouting NEET young people back to education / employment. SEN & EHCP young people. Looked After Children. Those who have an interest in practical skills and courses. Suitable for all abilities and no prior practical knowledge essential.

How can learners access provision? (Referral routes)

Referrals can come through schools/ colleges, SEN providers, other full time alternative providers, colleges, Youth Offending Service, Looked After Children Teams, Young Carers, Lewisham Concern Hub. We also offer some open access drop-in community sessions for any young person aged 11-18 years.

When, where and how is this provided?

Daily 9.30 - 2.30pm term-time programme for vocational courses and NEET young people or those referred. Courses are delivered from our fully equipped unique workshop space in Forest Hill, SE23 2SR. We have access to Beckenham Place Park Pump track and to a large woodland in Redhill where we take young people for riding trips and Forest School type activities.

Schools and local authorities that Young Lewisham Project works with

Lewisham and other local authorities, many schools in Lewisham and surrounding boroughs including, New Woodlands School, Sydenham and Forest Hill School, Prendergast, Drumbeat, Brent Knoll, Tutorial Foundation, The Complete Works, TLG, Bonus Pastor, EMLM. We also work closely with Children's Services and Youth Justice agencies in Lewisham, Greenwich, Lambeth, Southwark Bromley.

Charges

£140 per day per student 1-4 ratio, £250 per day one to one, pupils with EHCP will be charged according to their EHCP banding. One to one functional skills tuition £60 per hour.

Referral rates include hot home cooked lunch, all safety equipment, trips and accreditation costs.

Contact and person details

Eugene Watson – Operations Manager

Email: eugene@younglewisham.org.uk

Address: 124 Kilmore Road, Forest Hill, London, SE23 2SR

Tel no: 0208 291 9771 or 07305052486

Young Women's Hub

Type of provision

The Young Women's Hub is a safe, specialist trauma informed independent school, which offers holistic wraparound services and provides tailored made educational packages for students who have struggled or are struggling with mainstream education.

The Young Women's Hub was graded '**Good**' in all areas by Ofsted in May 2022.

Ofsted recognised that our staff '*have high expectations of pupils' work and behaviour*' and '*Pupils learn how to be resilient. They can better manage difficult situations with staff and their peers. They develop confidence and self-esteem.*'

Many of our students have experienced or are experiencing significant barriers to learning within mainstream education and presents with educational, social, and emotional needs. The majority of students who access the support of the Young Women's Hub come with either trauma or attachment issues, SEN (both formally diagnosed and undiagnosed) or in many instances both.

The Young Women's Hub curriculum ensures that the subjects that are covered support the knowledge and skills that students need in order to take advantage of opportunities, responsibilities, and experiences of later life.

To support our student's, we offer individual education plans and learning passports with wrap around pastoral support provided by a specialist pastoral team.

Curriculum offer

GSCE in English Language, English Literature, History

Functional skills in English and Math's

BTEC Hair and Beauty

BTEC Health and Social Care

Vocational studies including ASDAN short courses in PHSE, Science, Expressive Art and Beliefs and values.

Prince's Trust "Achieve" programme

Post-16 destination plans and work experience

Weekly PE sessions

Extra curriculum educational trips and workshops

Type of learner

The Young Women's Hub specialises in supporting vulnerable young women aged 11-16 and are highly experienced in improving low attendance, working with pregnant and young mums and those at risk of sexual exploitation, managing bullying and school phobias and low academic progress.

Safeguarding is a key area that we take pride in, and we build trusting relationships with family and other key agencies to ensure that the students are kept safe.

How can learners access KS4 provision? (Referral routes)

The Hub accepts referrals from local authorities, schools, and colleges, as well as providers/agencies that work with our target groups.

Please see our website where you can also download a referral form or telephone/email for more information.

When, where and how is this provided?

Young Women's Hub operates a full timetable with school starting at 9.30am and ending at 3pm, Monday to Thursday. The school finishes on 2pm finish on Friday. The hub provides breakfast and home cooked lunches as part of our provision and is included in the daily cost.

Schools and local authorities that Young Women's Hub works with

All schools and local authorities.

Charges

Please contact the Young Women's Hub for daily cost

Contact and person details

Philippa Wall, Head of School
308 Brownhill Road, Catford, SE6 1AU
Telephone: 0208 698 6675
Email: pwall@ywh.org.uk / cscott@ywh.org.uk

Y.O.U.R Beauty School (YBS)

Type of provision

- Hair
- Make-up
- Skincare-facials
- Waxing
- Eye treatments
- Nail treatments
- Manicure
- Pedicure
- Massage

We also offer qualifications in Maths and English functional level 1-2 and support preparation into employment via our employability course. Our mix of practical and theory based qualifications, support young people into further education, we also offer work experience within our on-site beauty salon, which helps towards gaining experience for employment.

Short Courses, five or 10 sessions (day release from home-school):

Level 1 Award in Basic Make-up Application

Level 1 Award in Nail treatment

Level 2 Award in the Art of Photographic Make-up

Type of learner

Young people aged 13-19 who would benefit from an alternative to mainstream education, who have an interest in beauty therapy, are at risk of exclusion or have disengaged from mainstream school.

How can learners access KS4 provision? (Referral routes)

Learners are referred by local authorities, schools and colleges, as well as providers/agencies that work with our target groups.

When, where and how is this provided?

Address: 28 Sangley Road, Catford, SE6 2JH

Monday-Friday: 10.00am-2.30pm (Lewisham term time dates). (9.30am - breakfast club)

Learners can start at any point during the academic year.

Schools and local authorities that Y.O.U.R Beauty School works with

Lewisham, Greenwich, Bromley, Southwark local authorities.

The John Roan School, Plumstead Manor, Harris Academy Greenwich, Deptford Green, Prendergast School.

Charges

From £120 per day.

Contact and person details

Head of School: Tracey-Anne Manning: tmanning@yourbeautyschool.co.uk

Deputy Head of School: Iyata Reid: ireid@yourbeautyschool.co.uk

Telephone: 0208 698 0345

Email: Referrals Email: provision@yourbeautyschool.co.uk

Website: www.yourbeautyschool.co.uk